

**LEGEND**

	= PROJECT LIMITS OF DISTURBANCE
	= EXISTING MAJOR CONTOUR
	= EXISTING MINOR CONTOUR
	= EXISTING RIGHT-OF-WAY
	= EXISTING SANITARY SEWER LINE
	= EXISTING MANHOLE
	= EXISTING FENCE LINE
	= EXISTING WATER LINE
	= EXISTING FIRE HYDRANT
	= EXISTING STORM DRAIN PIPE
	= EXISTING ELECTRICAL VAULT
	= EXISTING IRRIGATION VALVE
	= EXISTING PINE TREE
	= EXISTING HARDWOOD TREE
	= EXISTING SHRUB
	= PROPOSED WALL
	= EXISTING LIGHT POLE
	= PROPOSED DUKE PARKING LIGHT - SEE DETAIL 11L-6.4
	= EXISTING REPLACED DUKE LIGHT - SEE DETAIL 11L-6.4
	= EXISTING TREE/SHRUB SAVED
	= EXISTING TREE CREDIT
	= EXISTING BUILDING ENTRANCE
	= PROPOSED PLANT BEDS

**PAVEMENT SCHEDULE:**

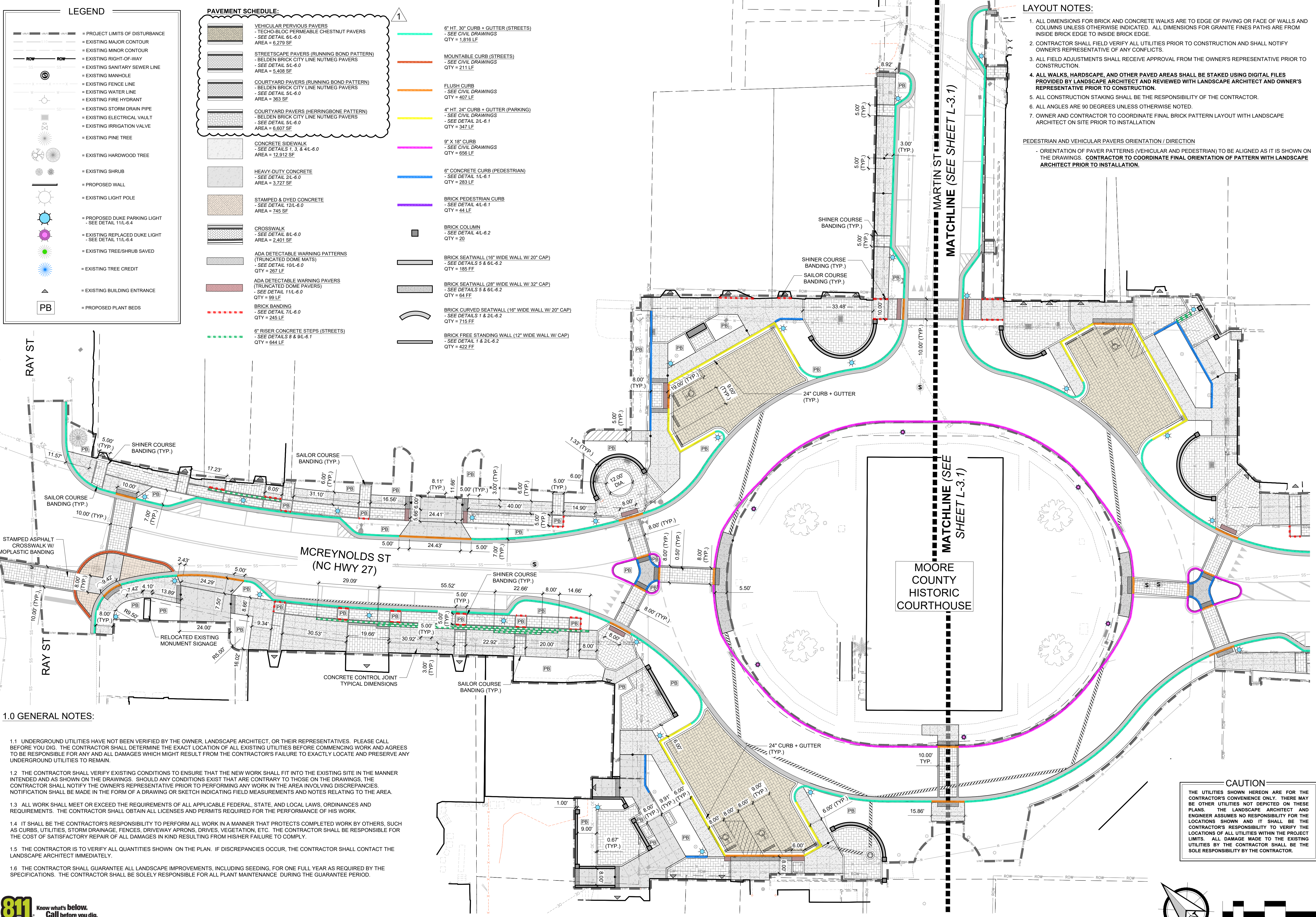
	VEHICULAR PERVIOUS PAVERS - TECO-BLOC PERMEABLE CHESTNUT PAVERS - SEE DETAIL 6L-6.0 AREA = 5,279 SF
	STREETSCAPE PAVERS (RUNNING BOND PATTERN) - BELDEN BRICK CITY LINE NUTMEG PAVERS - SEE DETAIL 5L-6.0 AREA = 5,408 SF
	COURTYARD PAVERS (RUNNING BOND PATTERN) - BELDEN BRICK CITY LINE NUTMEG PAVERS - SEE DETAIL 5L-6.0 AREA = 363 SF
	COURTYARD PAVERS (HERRINGBONE PATTERN) - BELDEN BRICK CITY LINE NUTMEG PAVERS - SEE DETAIL 5L-6.0 AREA = 6,607 SF
	CONCRETE SIDEWALK - SEE DETAILS 1, 3, & 4L-6.0 AREA = 12,912 SF
	HEAVY-DUTY CONCRETE - SEE DETAIL 2L-6.0 AREA = 3,727 SF
	STAMPED & DYED CONCRETE - SEE DETAIL 12L-6.0 AREA = 745 SF
	CROSSWALK - SEE DETAIL 8L-6.0 QTY = 287 LF
	ADA DETECTABLE WARNING PATTERNS (TRUNCATED DOME MATS) - SEE DETAIL 10L-6.0 QTY = 287 LF
	ADA DETECTABLE WARNING PAVERS (TRUNCATED DOME PAVERS) - SEE DETAIL 11L-6.0 QTY = 99 LF
	BRICK BANDING - SEE DETAIL 7L-6.0 QTY = 245 LF
	6" RISER CONCRETE STEPS (STREETS) - SEE DETAILS 8 & 9L-6.1 QTY = 644 LF
	6" HT 30" CURB + GUTTER (STREETS) - SEE CIVIL DRAWINGS QTY = 1,816 LF
	MOUNTABLE CURB (STREETS) - SEE CIVIL DRAWINGS QTY = 211 LF
	FLUSH CURB - SEE CIVIL DRAWINGS QTY = 407 LF
	4" HT 24" CURB + GUTTER (PARKING) - BELDEN BRICK CITY LINE NUTMEG PAVERS - SEE DETAIL 2L-6.1 QTY = 347 LF
	9" X 18" CURB - SEE CIVIL DRAWINGS QTY = 656 LF
	6" CONCRETE CURB (PEDESTRIAN) - SEE DETAIL 12L-6.1 QTY = 283 LF
	BRICK PEDESTRIAN CURB - SEE DETAIL 4L-6.1 QTY = 44 LF
	BRICK COLUMN - SEE DETAIL 4L-6.2 QTY = 20
	BRICK SEATWALL (16" WIDE WALL W/ 20" CAP) - SEE DETAILS 5 & 6L-6.2 QTY = 185 FF
	BRICK SEATWALL (28" WIDE WALL W/ 32" CAP) - SEE DETAILS 5 & 6L-6.2 QTY = 64 FF
	BRICK CURVED SEATWALL (16" WIDE WALL W/ 20" CAP) - SEE DETAILS 1 & 2L-6.2 QTY = 715 FF
	BRICK FREE STANDING WALL (12" WIDE WALL W/ CAP) - SEE DETAILS 1 & 2L-6.2 QTY = 422 FF

**LAYOUT NOTES:**

1. ALL DIMENSIONS FOR BRICK AND CONCRETE WALKS ARE TO EDGE OF PAVING OR FACE OF WALLS AND COLUMNS UNLESS OTHERWISE INDICATED. ALL DIMENSIONS FOR GRANITE FINES PATHS ARE FROM INSIDE BRICK EDGE TO INSIDE BRICK EDGE.
2. CONTRACTOR SHALL FIELD VERIFY ALL UTILITIES PRIOR TO CONSTRUCTION AND SHALL NOTIFY OWNER'S REPRESENTATIVE OF ANY CONFLICTS.
3. ALL FIELD ADJUSTMENTS SHALL RECEIVE APPROVAL FROM THE OWNER'S REPRESENTATIVE PRIOR TO CONSTRUCTION.
4. ALL WALKS, HARDSCAPE, AND OTHER PAVED AREAS SHALL BE STAKED USING DIGITAL FILES PROVIDED BY LANDSCAPE ARCHITECT AND REVIEWED WITH LANDSCAPE ARCHITECT AND OWNER'S REPRESENTATIVE PRIOR TO CONSTRUCTION.
5. ALL CONSTRUCTION STAKING SHALL BE THE RESPONSIBILITY OF THE CONTRACTOR.
6. ALL ANGLES ARE 90 DEGREES UNLESS OTHERWISE NOTED.
7. OWNER AND CONTRACTOR TO COORDINATE FINAL BRICK PATTERN LAYOUT WITH LANDSCAPE ARCHITECT ON SITE PRIOR TO INSTALLATION.

**PEDESTRIAN AND VEHICULAR PAVERS ORIENTATION / DIRECTION**

- ORIENTATION OF PAVEMENT PATTERNS (VEHICULAR AND PEDESTRIAN) TO BE ALIGNED AS IT IS SHOWN ON THE DRAWINGS. CONTRACTOR TO COORDINATE FINAL ORIENTATION OF PATTERN WITH LANDSCAPE ARCHITECT PRIOR TO INSTALLATION.



**1.0 GENERAL NOTES:**

- 1.1 UNDERGROUND UTILITIES HAVE NOT BEEN VERIFIED BY THE OWNER, LANDSCAPE ARCHITECT, OR THEIR REPRESENTATIVES. PLEASE CALL BEFORE YOU DIG. THE CONTRACTOR SHALL DETERMINE THE EXACT LOCATION OF ALL EXISTING UTILITIES BEFORE COMMENCING WORK AND AGREES TO BE RESPONSIBLE FOR ANY AND ALL DAMAGES WHICH MIGHT RESULT FROM THE CONTRACTOR'S FAILURE TO EXACTLY LOCATE AND PRESERVE ANY UNDERGROUND UTILITIES TO REMAIN.
- 1.2 THE CONTRACTOR SHALL VERIFY EXISTING CONDITIONS TO ENSURE THAT THE NEW WORK SHALL FIT INTO THE EXISTING SITE IN THE MANNER INTENDED AND AS SHOWN ON THE DRAWINGS. SHOULD ANY CONDITIONS EXIST THAT ARE CONTRARY TO THOSE ON THE DRAWINGS, THE CONTRACTOR SHALL NOTIFY THE OWNER'S REPRESENTATIVE PRIOR TO PERFORMING ANY WORK IN THE AREA INVOLVING DISCREPANCIES. NOTIFICATION SHALL BE MADE IN THE FORM OF A DRAWING OR SKETCH INDICATING FIELD MEASUREMENTS AND NOTES RELATING TO THE AREA.
- 1.3 ALL WORK SHALL MEET OR EXCEED THE REQUIREMENTS OF ALL APPLICABLE FEDERAL, STATE, AND LOCAL LAWS, ORDINANCES AND REQUIREMENTS. THE CONTRACTOR SHALL OBTAIN ALL LICENSES AND PERMITS REQUIRED FOR THE PERFORMANCE OF HIS WORK.
- 1.4 IT SHALL BE THE CONTRACTOR'S RESPONSIBILITY TO PERFORM ALL WORK IN A MANNER THAT PROTECTS COMPLETED WORK BY OTHERS, SUCH AS CURBS, UTILITIES, STORM DRAINAGE, FENCES, DRIVEWAY APRONS, DRIVES, VEGETATION, ETC. THE CONTRACTOR SHALL BE RESPONSIBLE FOR THE COST OF SATISFACTORY REPAIR OF ALL DAMAGES IN KIND RESULTING FROM HIS/HER FAILURE TO COMPLY.
- 1.5 THE CONTRACTOR IS TO VERIFY ALL QUANTITIES SHOWN ON THE PLAN. IF DISCREPANCIES OCCUR, THE CONTRACTOR SHALL CONTACT THE LANDSCAPE ARCHITECT IMMEDIATELY.
- 1.6 THE CONTRACTOR SHALL GUARANTEE ALL LANDSCAPE IMPROVEMENTS, INCLUDING SEEDING, FOR ONE FULL YEAR AS REQUIRED BY THE SPECIFICATIONS. THE CONTRACTOR SHALL BE SOLELY RESPONSIBLE FOR ALL PLANT MAINTENANCE DURING THE GUARANTEE PERIOD.

**CAUTION**

THE UTILITIES SHOWN HEREON ARE FOR THE CONTRACTOR'S CONVENIENCE ONLY. THERE MAY BE OTHER UTILITIES NOT DEPICTED ON THESE PLANS. THE LANDSCAPE ARCHITECT AND ENGINEER ASSUMES NO RESPONSIBILITY FOR THE LOCATIONS SHOWN AND IT SHALL BE THE CONTRACTOR'S RESPONSIBILITY TO VERIFY THE LOCATIONS OF ALL UTILITIES WITHIN THE PROJECT LIMITS. ALL DAMAGE MADE TO THE EXISTING UTILITIES BY THE CONTRACTOR SHALL BE THE SOLE RESPONSIBILITY BY THE CONTRACTOR.

140 APPECROSS RD, STE B  
PINEHURST, NC 28374  
P: (910) 684-6487  
W: www.3se.com



**REVISIONS:**

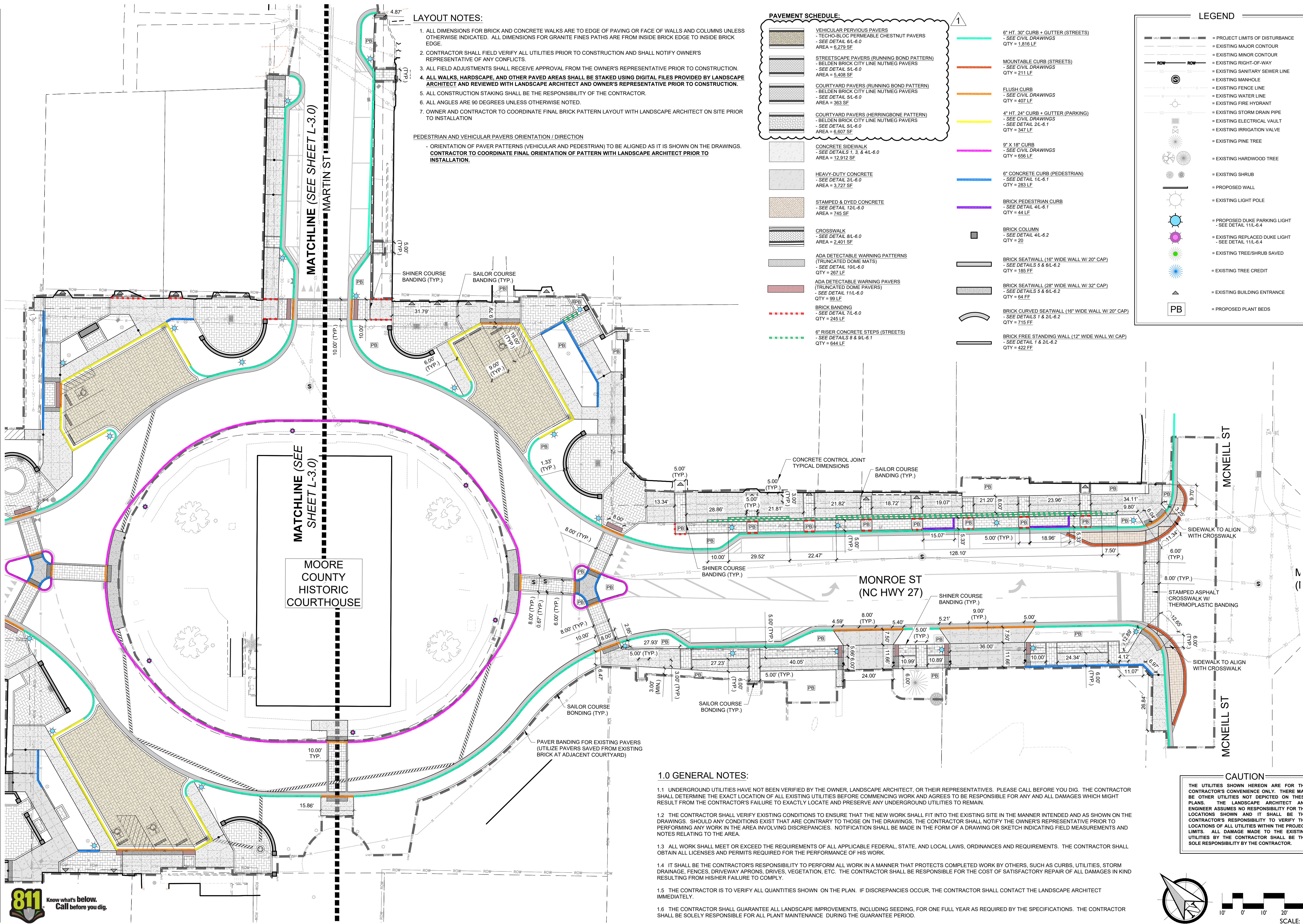
1. 2026-03-02 ADDENDUM #1

**CARTHAGE DOWNTOWN REVITALIZATION**  
CARTHAGE, NORTH CAROLINA

**SITE LAYOUT PLAN**



DATE: 2026-02-06  
DESIGNED BY: TWH  
DRAWN BY: DWM  
CHECKED BY: TWH  
SCALE: 1" = 20'  
PROJECT #: 250448  
SHEET NUMBER: L-3.0



**LAYOUT NOTES:**

1. ALL DIMENSIONS FOR BRICK AND CONCRETE WALKS ARE TO EDGE OF PAVING OR FACE OF WALLS AND COLUMNS UNLESS OTHERWISE INDICATED. ALL DIMENSIONS FOR GRANITE FINES PATHS ARE FROM INSIDE BRICK EDGE TO INSIDE BRICK EDGE.
2. CONTRACTOR SHALL FIELD VERIFY ALL UTILITIES PRIOR TO CONSTRUCTION AND SHALL NOTIFY OWNER'S REPRESENTATIVE OF ANY CONFLICTS.
3. ALL FIELD ADJUSTMENTS SHALL RECEIVE APPROVAL FROM THE OWNER'S REPRESENTATIVE PRIOR TO CONSTRUCTION.
4. ALL WALKS, HARDSCAPE, AND OTHER PAVED AREAS SHALL BE STAKED USING DIGITAL FILES PROVIDED BY LANDSCAPE ARCHITECT AND REVIEWED WITH LANDSCAPE ARCHITECT AND OWNER'S REPRESENTATIVE PRIOR TO CONSTRUCTION.
5. ALL CONSTRUCTION STAKING SHALL BE THE RESPONSIBILITY OF THE CONTRACTOR.
6. ALL ANGLES ARE 90 DEGREES UNLESS OTHERWISE NOTED.
7. OWNER AND CONTRACTOR TO COORDINATE FINAL BRICK PATTERN LAYOUT WITH LANDSCAPE ARCHITECT ON SITE PRIOR TO INSTALLATION.

**PEDESTRIAN AND VEHICULAR PAVERS ORIENTATION / DIRECTION**

- ORIENTATION OF PAVEMENT PATTERNS (VEHICULAR AND PEDESTRIAN) TO BE ALIGNED AS IT IS SHOWN ON THE DRAWINGS. CONTRACTOR TO COORDINATE FINAL ORIENTATION OF PATTERN WITH LANDSCAPE ARCHITECT PRIOR TO INSTALLATION.

**PAVEMENT SCHEDULE:**

<ul style="list-style-type: none"> <li>VEHICULAR PERVIOUS PAVERS           <ul style="list-style-type: none"> <li>TECHO-BLOC PERMEABLE CHESTNUT PAVERS               <ul style="list-style-type: none"> <li>- SEE DETAIL 6/L-6.0</li> <li>AREA = 8,279 SF</li> </ul> </li> </ul> </li> <li>STREETSCAPE PAVERS (RUNNING BOND PATTERN)           <ul style="list-style-type: none"> <li>BELDEN BRICK CITY LINE NUTMEG PAVERS               <ul style="list-style-type: none"> <li>- SEE DETAIL 5/L-6.0</li> <li>AREA = 5,408 SF</li> </ul> </li> </ul> </li> <li>COURTYARD PAVERS (RUNNING BOND PATTERN)           <ul style="list-style-type: none"> <li>BELDEN BRICK CITY LINE NUTMEG PAVERS               <ul style="list-style-type: none"> <li>- SEE DETAIL 5/L-6.0</li> <li>AREA = 363 SF</li> </ul> </li> </ul> </li> <li>COURTYARD PAVERS (HERRINGBONE PATTERN)           <ul style="list-style-type: none"> <li>BELDEN BRICK CITY LINE NUTMEG PAVERS               <ul style="list-style-type: none"> <li>- SEE DETAIL 2/L-6.0</li> <li>AREA = 6,607 SF</li> </ul> </li> </ul> </li> <li>CONCRETE SIDEWALK           <ul style="list-style-type: none"> <li>- SEE DETAILS 1, 3, &amp; 4/L-6.0</li> <li>AREA = 12,912 SF</li> </ul> </li> <li>HEAVY-DUTY CONCRETE           <ul style="list-style-type: none"> <li>- SEE DETAIL 2/L-6.0</li> <li>AREA = 3,727 SF</li> </ul> </li> <li>STAMPED &amp; DYED CONCRETE           <ul style="list-style-type: none"> <li>- SEE DETAIL 12/L-6.0</li> <li>AREA = 745 SF</li> </ul> </li> <li>CROSSWALK           <ul style="list-style-type: none"> <li>- SEE DETAIL 8/L-6.0</li> <li>AREA = 2,401 SF</li> </ul> </li> <li>ADA DETECTABLE WARNING PATTERNS (TRUNCATED DOME MATS)           <ul style="list-style-type: none"> <li>- SEE DETAIL 10/L-6.0</li> <li>QTY = 287 LF</li> </ul> </li> <li>ADA DETECTABLE WARNING PAVERS (TRUNCATED DOME PAVERS)           <ul style="list-style-type: none"> <li>- SEE DETAIL 11/L-6.0</li> <li>QTY = 99 LF</li> </ul> </li> <li>BRICK BANDING           <ul style="list-style-type: none"> <li>- SEE DETAIL 7/L-6.0</li> <li>QTY = 245 LF</li> </ul> </li> <li>6" RISER CONCRETE STEPS (STREETS)           <ul style="list-style-type: none"> <li>- SEE DETAILS 8 &amp; 9/L-6.1</li> <li>QTY = 644 LF</li> </ul> </li> </ul>	<ul style="list-style-type: none"> <li>6" HT. 30" CURB + GUTTER (STREETS)           <ul style="list-style-type: none"> <li>- SEE CIVIL DRAWINGS</li> <li>QTY = 1,816 LF</li> </ul> </li> <li>MOUNTABLE CURB (STREETS)           <ul style="list-style-type: none"> <li>- SEE CIVIL DRAWINGS</li> <li>QTY = 211 LF</li> </ul> </li> <li>FLUSH CURB           <ul style="list-style-type: none"> <li>- SEE CIVIL DRAWINGS</li> <li>QTY = 407 LF</li> </ul> </li> <li>4" HT. 24" CURB + GUTTER (PARKING)           <ul style="list-style-type: none"> <li>- SEE CIVIL DRAWINGS</li> <li>QTY = 347 LF</li> </ul> </li> <li>9" X 18" CURB           <ul style="list-style-type: none"> <li>- SEE CIVIL DRAWINGS</li> <li>QTY = 656 LF</li> </ul> </li> <li>6" CONCRETE CURB (PEDESTRIAN)           <ul style="list-style-type: none"> <li>- SEE DETAIL 1/L-6.1</li> <li>QTY = 283 LF</li> </ul> </li> <li>BRICK PEDESTRIAN CURB           <ul style="list-style-type: none"> <li>- SEE DETAIL 4/L-6.1</li> <li>QTY = 44 LF</li> </ul> </li> <li>BRICK COLUMN           <ul style="list-style-type: none"> <li>- SEE DETAIL 4/L-6.2</li> <li>QTY = 20</li> </ul> </li> <li>BRICK SEATWALL (16" WIDE WALL W/ 20" CAP)           <ul style="list-style-type: none"> <li>- SEE DETAILS 5 &amp; 6/L-6.2</li> <li>QTY = 185 FF</li> </ul> </li> <li>BRICK SEATWALL (28" WIDE WALL W/ 32" CAP)           <ul style="list-style-type: none"> <li>- SEE DETAILS 5 &amp; 6/L-6.2</li> <li>QTY = 64 FF</li> </ul> </li> <li>BRICK CURVED SEATWALL (16" WIDE WALL W/ 20" CAP)           <ul style="list-style-type: none"> <li>- SEE DETAILS 1 &amp; 2/L-6.2</li> <li>QTY = 215 FF</li> </ul> </li> <li>BRICK FREE STANDING WALL (12" WIDE WALL W/ CAP)           <ul style="list-style-type: none"> <li>- SEE DETAIL 1 &amp; 2/L-6.2</li> <li>QTY = 422 FF</li> </ul> </li> </ul>
--	---

**LEGEND**

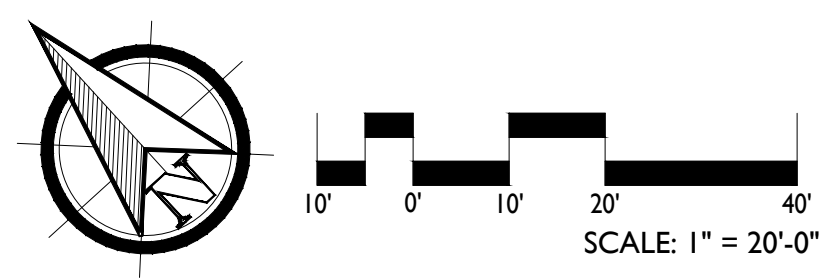
<ul style="list-style-type: none"> <li>PROJECT LIMITS OF DISTURBANCE</li> <li>EXISTING MAJOR CONTOUR</li> <li>EXISTING MINOR CONTOUR</li> <li>EXISTING RIGHT-OF-WAY</li> <li>EXISTING SANITARY SEWER LINE</li> <li>EXISTING MANHOLE</li> <li>EXISTING FENCE LINE</li> <li>EXISTING WATER LINE</li> <li>EXISTING FIRE HYDRANT</li> <li>EXISTING STORM DRAIN PIPE</li> <li>EXISTING ELECTRICAL VAULT</li> <li>EXISTING IRRIGATION VALVE</li> <li>EXISTING PINE TREE</li> <li>EXISTING HARDWOOD TREE</li> <li>EXISTING SHRUB</li> <li>PROPOSED WALL</li> <li>EXISTING LIGHT POLE</li> <li>PROPOSED DUKE PARKING LIGHT           <ul style="list-style-type: none"> <li>- SEE DETAIL 11/L-6.4</li> </ul> </li> <li>EXISTING REPLACED DUKE LIGHT           <ul style="list-style-type: none"> <li>- SEE DETAIL 11/L-6.4</li> </ul> </li> <li>EXISTING TREE/SHRUB SAVED</li> <li>EXISTING TREE CREDIT</li> <li>EXISTING BUILDING ENTRANCE</li> <li>PROPOSED PLANT BEDS</li> </ul>
---

**1.0 GENERAL NOTES:**

- 1.1 UNDERGROUND UTILITIES HAVE NOT BEEN VERIFIED BY THE OWNER, LANDSCAPE ARCHITECT, OR THEIR REPRESENTATIVES. PLEASE CALL BEFORE YOU DIG. THE CONTRACTOR SHALL DETERMINE THE EXACT LOCATION OF ALL EXISTING UTILITIES BEFORE COMMENCING WORK AND AGREES TO BE RESPONSIBLE FOR ANY AND ALL DAMAGES WHICH MIGHT RESULT FROM THE CONTRACTOR'S FAILURE TO EXACTLY LOCATE AND PRESERVE ANY UNDERGROUND UTILITIES TO REMAIN.
- 1.2 THE CONTRACTOR SHALL VERIFY EXISTING CONDITIONS TO ENSURE THAT THE NEW WORK SHALL FIT INTO THE EXISTING SITE IN THE MANNER INTENDED AND AS SHOWN ON THE DRAWINGS. SHOULD ANY CONDITIONS EXIST THAT ARE CONTRARY TO THOSE ON THE DRAWINGS, THE CONTRACTOR SHALL NOTIFY THE OWNER'S REPRESENTATIVE PRIOR TO PERFORMING ANY WORK IN THE AREA INVOLVING DISCREPANCIES. NOTIFICATION SHALL BE MADE IN THE FORM OF A DRAWING OR SKETCH INDICATING FIELD MEASUREMENTS AND NOTES RELATING TO THE AREA.
- 1.3 ALL WORK SHALL MEET OR EXCEED THE REQUIREMENTS OF ALL APPLICABLE FEDERAL, STATE, AND LOCAL LAWS, ORDINANCES AND REQUIREMENTS. THE CONTRACTOR SHALL OBTAIN ALL LICENSES AND PERMITS REQUIRED FOR THE PERFORMANCE OF HIS WORK.
- 1.4 IT SHALL BE THE CONTRACTOR'S RESPONSIBILITY TO PERFORM ALL WORK IN A MANNER THAT PROTECTS COMPLETED WORK BY OTHERS, SUCH AS CURBS, UTILITIES, STORM DRAINAGE, FENCES, DRIVEWAY APRONS, DRIVES, VEGETATION, ETC. THE CONTRACTOR SHALL BE RESPONSIBLE FOR THE COST OF SATISFACTORY REPAIR OF ALL DAMAGES IN KIND RESULTING FROM HIS/HER FAILURE TO COMPLY.
- 1.5 THE CONTRACTOR IS TO VERIFY ALL QUANTITIES SHOWN ON THE PLAN. IF DISCREPANCIES OCCUR, THE CONTRACTOR SHALL CONTACT THE LANDSCAPE ARCHITECT IMMEDIATELY.
- 1.6 THE CONTRACTOR SHALL GUARANTEE ALL LANDSCAPE IMPROVEMENTS, INCLUDING SEEDING, FOR ONE FULL YEAR AS REQUIRED BY THE SPECIFICATIONS. THE CONTRACTOR SHALL BE SOLELY RESPONSIBLE FOR ALL PLANT MAINTENANCE DURING THE GUARANTEE PERIOD.

**CAUTION**

THE UTILITIES SHOWN HEREON ARE FOR THE CONTRACTOR'S CONVENIENCE ONLY. THERE MAY BE OTHER UTILITIES NOT DEPICTED ON THESE PLANS. THE LANDSCAPE ARCHITECT AND ENGINEER ASSUMES NO RESPONSIBILITY FOR THE LOCATIONS SHOWN AND IT SHALL BE THE CONTRACTOR'S RESPONSIBILITY TO VERIFY THE LOCATIONS OF ALL UTILITIES WITHIN THE PROJECT LIMITS. ALL DAMAGE MADE TO THE EXISTING UTILITIES BY THE CONTRACTOR SHALL BE THE SOLE RESPONSIBILITY BY THE CONTRACTOR.



140 APPECROSS RD, STE B  
PINEHURST, NC 28374  
P: (910) 684-6487  
W: www.3se.com

**3 SE**

NO. 122  
COURT E. KOONZ  
2/6/2024

REVISIONS:  
1. 2026-03-02 ADDENDUM #1

**CARTHAGE DOWNTOWN REVITALIZATION**  
CARTHAGE, NORTH CAROLINA

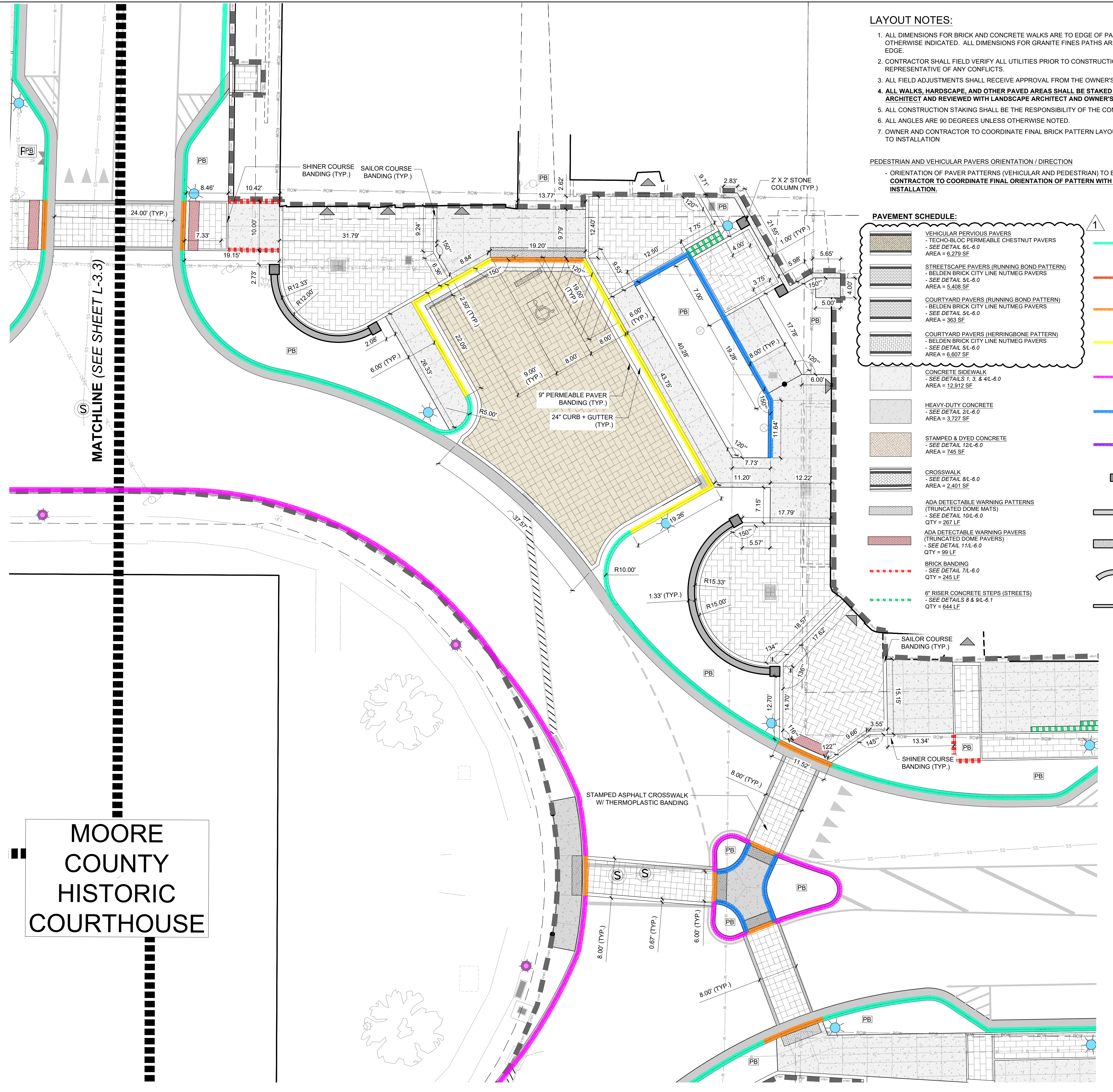
**SITE LAYOUT PLAN**

DATE: 2026-02-06  
DESIGNED BY: TWH  
DRAWN BY: DWM  
CHECKED BY: TWH  
SCALE: 1"=20'  
PROJECT #: 250448  
SHEET NUMBER:  
**L-3.1**

LEGEND	
	= PROJECT LIMITS OF DISTURBANCE
	= EXISTING MAJOR CONTOUR
	= EXISTING MINOR CONTOUR
	= EXISTING RIGHT-OF-WAY
	= EXISTING SANITARY SEWER LINE
	= EXISTING MANHOLE
	= EXISTING FENCE LINE
	= EXISTING WATER LINE
	= EXISTING FIRE HYDRANT
	= EXISTING STORM DRAIN PIPE
	= EXISTING ELECTRICAL VAULT
	= EXISTING IRRIGATION VALVE
	= EXISTING PINE TREE
	= EXISTING HARDWOOD TREE
	= EXISTING SHRUB
	= PROPOSED WALL
	= EXISTING LIGHT POLE
	= PROPOSED DUKE PARKING LIGHT - SEE DETAIL 11L-6.4
	= EXISTING REPLACED DUKE LIGHT - SEE DETAIL 11L-6.4
	= EXISTING TREE/SHRUB SAVED
	= EXISTING TREE CREDIT
	= EXISTING BUILDING ENTRANCE
	= PROPOSED PLANT BEDS

**1.0 GENERAL NOTES:**

- UNDERGROUND UTILITIES HAVE NOT BEEN VERIFIED BY THE OWNER, LANDSCAPE ARCHITECT, OR THEIR REPRESENTATIVES. PLEASE CALL BEFORE YOU DIG. THE CONTRACTOR SHALL DETERMINE THE EXACT LOCATION OF ALL EXISTING UTILITIES BEFORE COMMENCING WORK AND AGREES TO BE RESPONSIBLE FOR ANY AND ALL DAMAGES WHICH MIGHT RESULT FROM THE CONTRACTOR'S FAILURE TO EXACTLY LOCATE AND PRESERVE ANY UNDERGROUND UTILITIES TO REMAIN.
- THE CONTRACTOR SHALL VERIFY EXISTING CONDITIONS TO ENSURE THAT THE NEW WORK SHALL FIT INTO THE EXISTING SITE IN THE MANNER INTENDED AND AS SHOWN ON THE DRAWINGS. SHOULD ANY CONDITIONS EXIST THAT ARE CONTRARY TO THOSE ON THE DRAWINGS, THE CONTRACTOR SHALL NOTIFY THE OWNER'S REPRESENTATIVE PRIOR TO PERFORMING ANY WORK IN THE AREA INVOLVING DISCREPANCIES. NOTIFICATION SHALL BE MADE IN THE FORM OF A DRAWING OR SKETCH INDICATING FIELD MEASUREMENTS AND NOTES RELATING TO THE AREA.
- ALL WORK SHALL MEET OR EXCEED THE REQUIREMENTS OF ALL APPLICABLE FEDERAL, STATE, AND LOCAL LAWS, ORDINANCES AND REQUIREMENTS. THE CONTRACTOR SHALL OBTAIN ALL LICENSES AND PERMITS REQUIRED FOR THE PERFORMANCE OF HIS WORK.
- IT SHALL BE THE CONTRACTOR'S RESPONSIBILITY TO PERFORM ALL WORK IN A MANNER THAT PROTECTS COMPLETED WORK BY OTHERS, SUCH AS CURBS, UTILITIES, STORM DRAINAGE, FENCES, DRIVEWAY APRONS, DRIVES, VEGETATION, ETC. THE CONTRACTOR SHALL BE RESPONSIBLE FOR THE COST OF SATISFACTORY REPAIR OF ALL DAMAGES IN KIND RESULTING FROM HIS/HER FAILURE TO COMPLY.
- THE CONTRACTOR IS TO VERIFY ALL QUANTITIES SHOWN ON THE PLAN. IF DISCREPANCIES OCCUR, THE CONTRACTOR SHALL CONTACT THE LANDSCAPE ARCHITECT IMMEDIATELY.
- THE CONTRACTOR SHALL GUARANTEE ALL LANDSCAPE IMPROVEMENTS, INCLUDING SEEDING, FOR ONE FULL YEAR AS REQUIRED BY THE SPECIFICATIONS. THE CONTRACTOR SHALL BE SOLELY RESPONSIBLE FOR ALL PLANT MAINTENANCE DURING THE GUARANTEE PERIOD.



**LAYOUT NOTES:**

- ALL DIMENSIONS FOR BRICK AND CONCRETE WALKS ARE TO EDGE OF PAVING OR FACE OF WALLS AND COLUMNS UNLESS OTHERWISE INDICATED. ALL DIMENSIONS FOR GRANITE FINES PATHS ARE FROM INSIDE BRICK EDGE TO INSIDE BRICK EDGE.
- CONTRACTOR SHALL FIELD VERIFY ALL UTILITIES PRIOR TO CONSTRUCTION AND SHALL NOTIFY OWNER'S REPRESENTATIVE OF ANY CONFLICTS.
- ALL FIELD ADJUSTMENTS SHALL RECEIVE APPROVAL FROM THE OWNER'S REPRESENTATIVE PRIOR TO CONSTRUCTION.
- ALL WALKS, HARDSCAPE, AND OTHER PAVED AREAS SHALL BE STAKED USING DIGITAL FILES PROVIDED BY LANDSCAPE ARCHITECT AND REVIEWED WITH LANDSCAPE ARCHITECT AND OWNER'S REPRESENTATIVE PRIOR TO CONSTRUCTION.
- ALL CONSTRUCTION STAKING SHALL BE THE RESPONSIBILITY OF THE CONTRACTOR.
- ALL ANGLES ARE 90 DEGREES UNLESS OTHERWISE NOTED.
- OWNER AND CONTRACTOR TO COORDINATE FINAL BRICK PATTERN LAYOUT WITH LANDSCAPE ARCHITECT ON SITE PRIOR TO INSTALLATION.

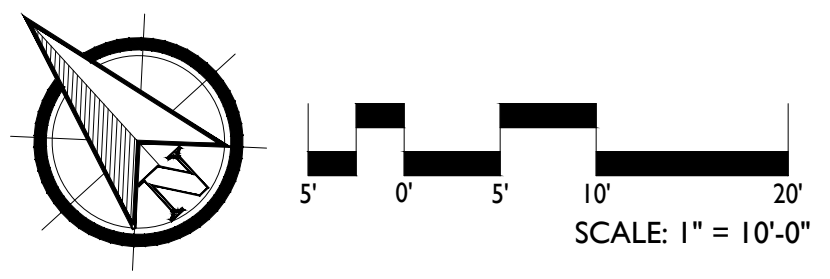
PEDESTRIAN AND VEHICULAR PAVERS ORIENTATION / DIRECTION  
 - ORIENTATION OF PAVEMENT PATTERNS (VEHICULAR AND PEDESTRIAN) TO BE ALIGNED AS IT IS SHOWN ON THE DRAWINGS.  
 CONTRACTOR TO COORDINATE FINAL ORIENTATION OF PATTERN WITH LANDSCAPE ARCHITECT PRIOR TO INSTALLATION.

**PAVEMENT SCHEDULE:**

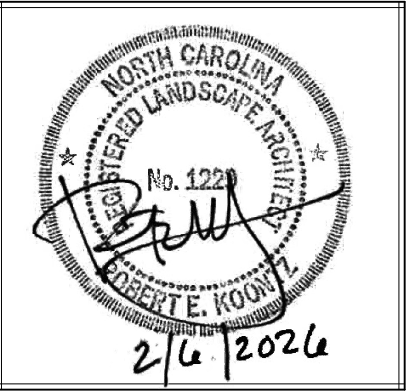
	VEHICULAR PERMEABLE PAVERS - TECO-BLOC PERMEABLE CHESTNUT PAVERS - SEE DETAIL 6L-6.0 AREA = 6,279 SF		6" HT. 30" CURB + GUTTER (STREETS) - SEE CIVIL DRAWINGS QTY = 1,816 LF
	STREETSCAPE PAVERS (RUNNING BOND PATTERN) - BELDEN BRICK CITY LINE NUTMEG PAVERS - SEE DETAIL 5L-6.0 AREA = 5,408 SF		MOUNTABLE CURB (STREETS) - SEE CIVIL DRAWINGS QTY = 211 LF
	COURTYARD PAVERS (RUNNING BOND PATTERN) - BELDEN BRICK CITY LINE NUTMEG PAVERS - SEE DETAIL 5L-6.0 AREA = 363 SF		FLUSH CURB - SEE CIVIL DRAWINGS QTY = 407 LF
	COURTYARD PAVERS (HERRINGBONE PATTERN) - BELDEN BRICK CITY LINE NUTMEG PAVERS - SEE DETAIL 5L-6.0 AREA = 6,607 SF		4" HT. 24" CURB + GUTTER (PARKING) - SEE CIVIL DRAWINGS - SEE DETAIL 2L-6.1 QTY = 347 LF
	CONCRETE SIDEWALK - SEE DETAILS 1, 3, & 4L-6.0 AREA = 12,912 SF		9" X 18" CURB - SEE CIVIL DRAWINGS QTY = 656 LF
	HEAVY-DUTY CONCRETE - SEE DETAIL 2L-6.0 AREA = 3,727 SF		6" CONCRETE CURB (PEDESTRIAN) - SEE DETAIL 1L-6.1 QTY = 283 LF
	STAMPED & DYED CONCRETE - SEE DETAIL 12L-6.0 AREA = 745 SF		BRICK PEDESTRIAN CURB - SEE DETAIL 4L-6.1 QTY = 44 LF
	CROSSWALK - SEE DETAIL 8L-6.0 AREA = 2,401 SF		BRICK COLUMN - SEE DETAIL 4L-6.2 QTY = 20
	ADA DETECTABLE WARNING PATTERNS (TRUNCATED DOME MATS) - SEE DETAIL 10L-6.0 QTY = 267 LF		BRICK SEATWALL (16" WIDE WALL W/ 20" CAP) - SEE DETAILS 5 & 6L-6.2 QTY = 165 FF
	ADA DETECTABLE WARNING PAVERS (TRUNCATED DOME PAVERS) - SEE DETAIL 11L-6.0 QTY = 99 LF		BRICK SEATWALL (28" WIDE WALL W/ 32" CAP) - SEE DETAILS 5 & 6L-6.2 QTY = 64 FF
	BRICK BANDING - SEE DETAIL 7L-6.0 QTY = 245 LF		BRICK CURVED SEATWALL (16" WIDE WALL W/ 20" CAP) - SEE DETAILS 1 & 2L-6.2 QTY = 715 FF
	6" RISER CONCRETE STEPS (STREETS) - SEE DETAILS 8 & 9L-6.1 QTY = 644 LF		BRICK FREE STANDING WALL (12" WIDE WALL W/ CAP) - SEE DETAIL 1 & 2L-6.2 QTY = 422 FF

**MOORE COUNTY HISTORIC COURTHOUSE**

**CAUTION**  
 THE UTILITIES SHOWN HEREON ARE FOR THE CONTRACTOR'S CONVENIENCE ONLY. THERE MAY BE OTHER UTILITIES NOT DEPICTED ON THESE PLANS. THE LANDSCAPE ARCHITECT AND ENGINEER ASSUMES NO RESPONSIBILITY FOR THE LOCATIONS SHOWN AND IT SHALL BE THE CONTRACTOR'S RESPONSIBILITY TO VERIFY THE LOCATIONS OF ALL UTILITIES WITHIN THE PROJECT LIMITS. ALL DAMAGE MADE TO THE EXISTING UTILITIES BY THE CONTRACTOR SHALL BE THE SOLE RESPONSIBILITY BY THE CONTRACTOR.



140 APPLECROSS RD., STE B  
 PINEHURST, NC 28374  
 P: (910) 684-8487  
 W: www.t3co.com



REVISIONS:  
 1. 2026-03-02 ADDENDUM #1

**CARTHAGE DOWNTOWN REVITALIZATION**  
 CARTHAGE, NORTH CAROLINA

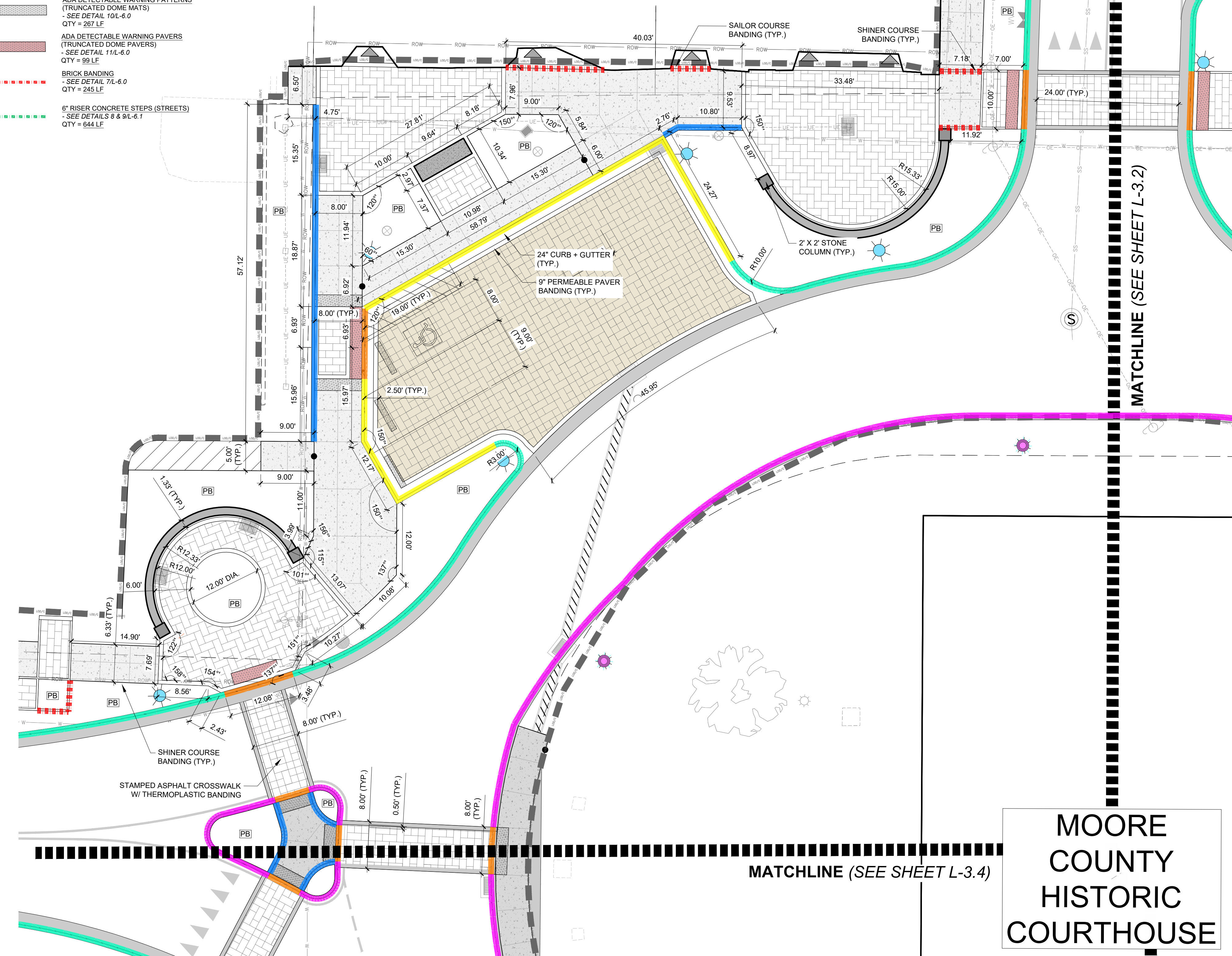
**SITE LAYOUT PLAN ENLARGEMENT**

DATE: 2026-02-06  
 DESIGNED BY: TWH  
 DRAWN BY: DVM  
 CHECKED BY: TWH  
 SCALE: 1/8"=1'-0"  
 PROJECT #: 250448  
 SHEET NUMBER: L-3.2

LEGEND	
	PROJECT LIMITS OF DISTURBANCE
	EXISTING MAJOR CONTOUR
	EXISTING MINOR CONTOUR
	EXISTING RIGHT-OF-WAY
	EXISTING SANITARY SEWER LINE
	EXISTING MANHOLE
	EXISTING WATER LINE
	EXISTING FIRE HYDRANT
	EXISTING STORM DRAIN PIPE
	EXISTING ELECTRICAL VAULT
	EXISTING IRRIGATION VALVE
	EXISTING PINE TREE
	EXISTING HARDWOOD TREE
	EXISTING SHRUB
	PROPOSED WALL
	EXISTING LIGHT POLE
	PROPOSED DUKE PARKING LIGHT - SEE DETAIL 11/L-6.4
	EXISTING REPLACED DUKE LIGHT - SEE DETAIL 11/L-6.4
	EXISTING TREE/SHRUB SAVED
	EXISTING TREE CREDIT
	EXISTING BUILDING ENTRANCE
	PROPOSED PLANT BEDS

PAVEMENT SCHEDULE:	
	VEHICULAR PERVIOUS PAVERS - TECO-BLOC PERMEABLE CHESTNUT PAVERS - SEE DETAIL 6/L-6.0 AREA = 6,279 SF
	STREETSCAPE PAVERS (RUNNING BOND PATTERN) - BELDEN BRICK CITY LINE NUTMEG PAVERS - SEE DETAIL 5/L-6.0 AREA = 5,408 SF
	COURTYARD PAVERS (RUNNING BOND PATTERN) - BELDEN BRICK CITY LINE NUTMEG PAVERS - SEE DETAIL 5/L-6.0 AREA = 383 SF
	COURTYARD PAVERS (HERRINGBONE PATTERN) - BELDEN BRICK CITY LINE NUTMEG PAVERS - SEE DETAIL 5/L-6.0 AREA = 5,607 SF
	CONCRETE SIDEWALK - SEE DETAILS 1, 3, & 4/L-6.0 AREA = 12,912 SF
	HEAVY-DUTY CONCRETE - SEE DETAIL 2/L-6.0 AREA = 3,727 SF
	STAMPED & DYED CONCRETE - SEE DETAIL 10/L-6.0 AREA = 745 SF
	CROSSWALK - SEE DETAIL 8/L-6.0 AREA = 2,401 SF
	ADA DETECTABLE WARNING PATTERNS (TRUNCATED DOME MATS) - SEE DETAIL 10/L-6.0 QTY = 267 LF
	ADA DETECTABLE WARNING PAVERS (TRUNCATED DOME PAVERS) - SEE DETAIL 11/L-6.0 QTY = 99 LF
	BRICK BANDING - SEE DETAIL 7/L-6.0 QTY = 245 LF
	6" RISER CONCRETE STEPS (STREETS) - SEE DETAILS 8 & 9/L-6.1 QTY = 644 LF

	6" HT. 30" CURB + GUTTER (STREETS) - SEE CIVIL DRAWINGS QTY = 1,816 LF
	MOUNTABLE CURB (STREETS) - SEE CIVIL DRAWINGS QTY = 211 LF
	FLUSH CURB - SEE CIVIL DRAWINGS QTY = 407 LF
	4" HT. 24" CURB + GUTTER (PARKING) - SEE CIVIL DRAWINGS QTY = 347 LF
	9" X 18" CURB - SEE DETAILS 1 & 2/L-6.2 QTY = 656 LF
	6" CONCRETE CURB (PEDESTRIAN) - SEE DETAIL 1/L-6.1 QTY = 283 LF
	BRICK PEDESTRIAN CURB - SEE DETAIL 4/L-6.1 QTY = 44 LF
	BRICK COLUMN - SEE DETAIL 4/L-6.2 QTY = 20
	BRICK SEATWALL (16" WIDE WALL W/ 20" CAP) - SEE DETAILS 5 & 6/L-6.2 QTY = 185 FF
	BRICK SEATWALL (28" WIDE WALL W/ 32" CAP) - SEE DETAILS 5 & 6/L-6.2 QTY = 64 FF
	BRICK CURVED SEATWALL (16" WIDE WALL W/ 20" CAP) - SEE DETAILS 1 & 2/L-6.2 QTY = 715 FF
	BRICK FREE STANDING WALL (12" WIDE WALL W/ CAP) - SEE DETAIL 1 & 2/L-6.2 QTY = 422 FF



- 1.0 GENERAL NOTES:**
- UNDERGROUND UTILITIES HAVE NOT BEEN VERIFIED BY THE OWNER, LANDSCAPE ARCHITECT, OR THEIR REPRESENTATIVES. PLEASE CALL BEFORE YOU DIG. THE CONTRACTOR SHALL DETERMINE THE EXACT LOCATION OF ALL EXISTING UTILITIES BEFORE COMMENCING WORK AND AGREES TO BE RESPONSIBLE FOR ANY AND ALL DAMAGES WHICH MIGHT RESULT FROM THE CONTRACTOR'S FAILURE TO EXACTLY LOCATE AND PRESERVE ANY UNDERGROUND UTILITIES TO REMAIN.
  - THE CONTRACTOR SHALL VERIFY EXISTING CONDITIONS TO ENSURE THAT THE NEW WORK SHALL FIT INTO THE EXISTING SITE IN THE MANNER INTENDED AND AS SHOWN ON THE DRAWINGS. SHOULD ANY CONDITIONS EXIST THAT ARE CONTRARY TO THOSE ON THE DRAWINGS, THE CONTRACTOR SHALL NOTIFY THE OWNER'S REPRESENTATIVE PRIOR TO PERFORMING ANY WORK IN THE AREA INVOLVING DISCREPANCIES. NOTIFICATION SHALL BE MADE IN THE FORM OF A DRAWING OR SKETCH INDICATING FIELD MEASUREMENTS AND NOTES RELATING TO THE AREA.
  - ALL WORK SHALL MEET OR EXCEED THE REQUIREMENTS OF ALL APPLICABLE FEDERAL, STATE, AND LOCAL LAWS, ORDINANCES AND REQUIREMENTS. THE CONTRACTOR SHALL OBTAIN ALL LICENSES AND PERMITS REQUIRED FOR THE PERFORMANCE OF HIS WORK.
  - IT SHALL BE THE CONTRACTOR'S RESPONSIBILITY TO PERFORM ALL WORK IN A MANNER THAT PROTECTS COMPLETED WORK BY OTHERS, SUCH AS CURBS, UTILITIES, STORM DRAINAGE, FENCES, DRIVEWAY APRONS, DRIVES, VEGETATION, ETC. THE CONTRACTOR SHALL BE RESPONSIBLE FOR THE COST OF SATISFACTORY REPAIR OF ALL DAMAGES IN KIND RESULTING FROM HIS/HER FAILURE TO COMPLY.
  - THE CONTRACTOR IS TO VERIFY ALL QUANTITIES SHOWN ON THE PLAN. IF DISCREPANCIES OCCUR, THE CONTRACTOR SHALL CONTACT THE LANDSCAPE ARCHITECT IMMEDIATELY.
  - THE CONTRACTOR SHALL GUARANTEE ALL LANDSCAPE IMPROVEMENTS, INCLUDING SEEDING, FOR ONE FULL YEAR AS REQUIRED BY THE SPECIFICATIONS. THE CONTRACTOR SHALL BE SOLELY RESPONSIBLE FOR ALL PLANT MAINTENANCE DURING THE GUARANTEE PERIOD.

- LAYOUT NOTES:**
- ALL DIMENSIONS FOR BRICK AND CONCRETE WALKS ARE TO EDGE OF PAVING OR FACE OF WALLS AND COLUMNS UNLESS OTHERWISE INDICATED. ALL DIMENSIONS FOR GRANITE FINES PATHS ARE FROM INSIDE BRICK EDGE TO INSIDE BRICK EDGE.
  - CONTRACTOR SHALL FIELD VERIFY ALL UTILITIES PRIOR TO CONSTRUCTION AND SHALL NOTIFY OWNER'S REPRESENTATIVE OF ANY CONFLICTS.
  - ALL FIELD ADJUSTMENTS SHALL RECEIVE APPROVAL FROM THE OWNER'S REPRESENTATIVE PRIOR TO CONSTRUCTION.
  - ALL WALKS, HARDSCAPE, AND OTHER PAVED AREAS SHALL BE STAKED USING DIGITAL FILES PROVIDED BY LANDSCAPE ARCHITECT AND REVIEWED WITH LANDSCAPE ARCHITECT AND OWNER'S REPRESENTATIVE PRIOR TO CONSTRUCTION.
  - ALL CONSTRUCTION STAKING SHALL BE THE RESPONSIBILITY OF THE CONTRACTOR.
  - ALL ANGLES ARE 90 DEGREES UNLESS OTHERWISE NOTED.
  - OWNER AND CONTRACTOR TO COORDINATE FINAL BRICK PATTERN LAYOUT WITH LANDSCAPE ARCHITECT ON SITE PRIOR TO INSTALLATION.

**PEDESTRIAN AND VEHICULAR PAVERS ORIENTATION / DIRECTION**

- ORIENTATION OF PAVER PATTERNS (VEHICULAR AND PEDESTRIAN) TO BE ALIGNED AS IT IS SHOWN ON THE DRAWINGS. CONTRACTOR TO COORDINATE FINAL ORIENTATION OF PATTERN WITH LANDSCAPE ARCHITECT PRIOR TO INSTALLATION.

**CAUTION**

THE UTILITIES SHOWN HEREON ARE FOR THE CONTRACTOR'S CONVENIENCE ONLY. THERE MAY BE OTHER UTILITIES NOT DEPICTED ON THESE PLANS. THE LANDSCAPE ARCHITECT AND ENGINEER ASSUMES NO RESPONSIBILITY FOR THE LOCATIONS SHOWN AND IT SHALL BE THE CONTRACTOR'S RESPONSIBILITY TO VERIFY THE LOCATIONS OF ALL UTILITIES WITHIN THE PROJECT LIMITS. ALL DAMAGE MADE TO THE EXISTING UTILITIES BY THE CONTRACTOR SHALL BE THE SOLE RESPONSIBILITY BY THE CONTRACTOR.



REVISIONS:

- 2026-03-02 ADDENDUM #1

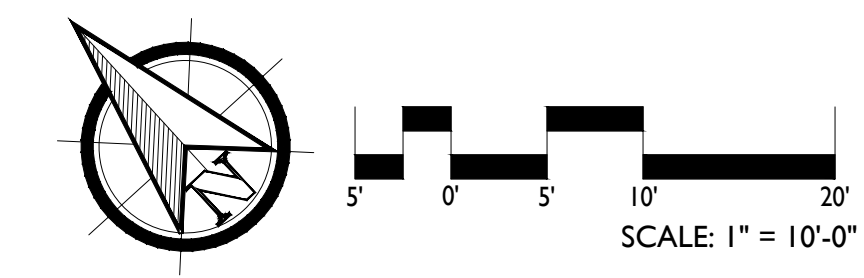
**CARTHAGE DOWNTOWN REVITALIZATION**  
CARTHAGE, NORTH CAROLINA

**SITE LAYOUT PLAN ENLARGEMENT**

DATE: 2026-02-06  
DESIGNED BY: TWH  
DRAWN BY: DVM  
CHECKED BY: TWH  
SCALE: 1" = 10'  
PROJECT #: 250448  
SHEET NUMBER#: L-3.3



**MOORE COUNTY HISTORIC COURTHOUSE**



LEGEND	
	PROJECT LIMITS OF DISTURBANCE
	EXISTING MAJOR CONTOUR
	EXISTING MINOR CONTOUR
	EXISTING RIGHT-OF-WAY
	EXISTING SANITARY SEWER LINE
	EXISTING MANHOLE
	EXISTING FENCE LINE
	EXISTING WATER LINE
	EXISTING FIRE HYDRANT
	EXISTING STORM DRAIN PIPE
	EXISTING ELECTRICAL VAULT
	EXISTING IRRIGATION VALVE
	EXISTING PINE TREE
	EXISTING HARDWOOD TREE
	EXISTING SHRUB
	PROPOSED WALL
	EXISTING LIGHT POLE
	PROPOSED DUKE PARKING LIGHT - SEE DETAIL 11/L-6.4
	EXISTING REPLACED DUKE LIGHT - SEE DETAIL 11/L-6.4
	EXISTING TREE/SHRUB SAVED
	EXISTING TREE CREDIT
	EXISTING BUILDING ENTRANCE
	PROPOSED PLANT BEDS

**1.0 GENERAL NOTES:**

1.1 UNDERGROUND UTILITIES HAVE NOT BEEN VERIFIED BY THE OWNER, LANDSCAPE ARCHITECT, OR THEIR REPRESENTATIVES. PLEASE CALL BEFORE YOU DIG. THE CONTRACTOR SHALL DETERMINE THE EXACT LOCATION OF ALL EXISTING UTILITIES BEFORE COMMENCING WORK AND AGREES TO BE RESPONSIBLE FOR ANY AND ALL DAMAGES WHICH MIGHT RESULT FROM THE CONTRACTOR'S FAILURE TO EXACTLY LOCATE AND PRESERVE ANY UNDERGROUND UTILITIES TO REMAIN.

1.2 THE CONTRACTOR SHALL VERIFY EXISTING CONDITIONS TO ENSURE THAT THE NEW WORK SHALL FIT INTO THE EXISTING SITE IN THE MANNER INTENDED AND AS SHOWN ON THE DRAWINGS. SHOULD ANY CONDITIONS EXIST THAT ARE CONTRARY TO THOSE ON THE DRAWINGS, THE CONTRACTOR SHALL NOTIFY THE OWNER'S REPRESENTATIVE PRIOR TO PERFORMING ANY WORK IN THE AREA INVOLVING DISCREPANCIES. NOTIFICATION SHALL BE MADE IN THE FORM OF A DRAWING OR SKETCH INDICATING FIELD MEASUREMENTS AND NOTES RELATING TO THE AREA.

1.3 ALL WORK SHALL MEET OR EXCEED THE REQUIREMENTS OF ALL APPLICABLE FEDERAL, STATE, AND LOCAL LAWS, ORDINANCES AND REQUIREMENTS. THE CONTRACTOR SHALL OBTAIN ALL LICENSES AND PERMITS REQUIRED FOR THE PERFORMANCE OF HIS WORK.

1.4 IT SHALL BE THE CONTRACTOR'S RESPONSIBILITY TO PERFORM ALL WORK IN A MANNER THAT PROTECTS COMPLETED WORK BY OTHERS, SUCH AS CURBS, UTILITIES, STORM DRAINAGE, FENCES, DRIVEWAY APRONS, DRIVES, VEGETATION, ETC. THE CONTRACTOR SHALL BE RESPONSIBLE FOR THE COST OF SATISFACTORY REPAIR OF ALL DAMAGES IN KIND RESULTING FROM HIS/HER FAILURE TO COMPLY.

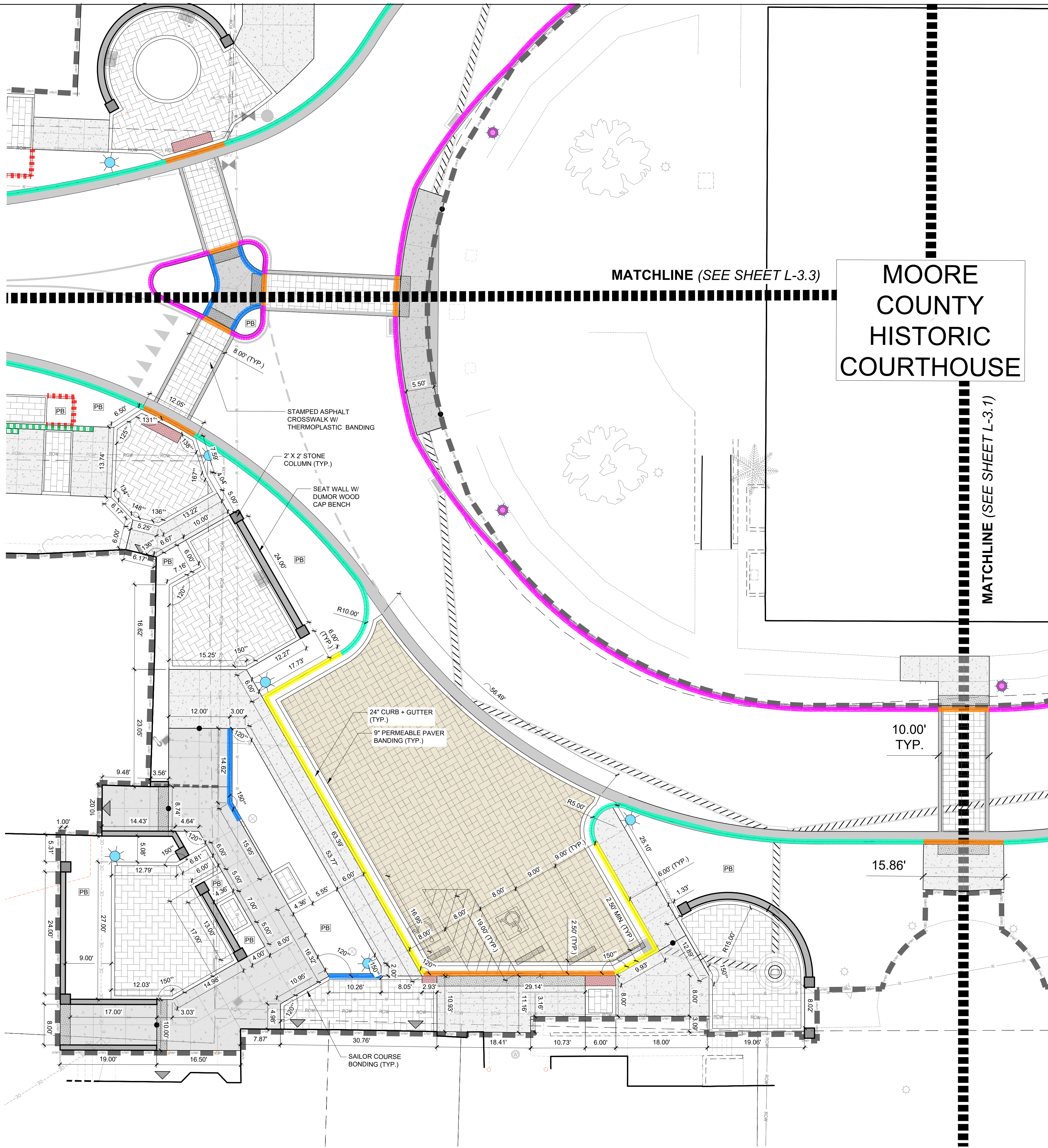
1.5 THE CONTRACTOR IS TO VERIFY ALL QUANTITIES SHOWN ON THE PLAN. IF DISCREPANCIES OCCUR, THE CONTRACTOR SHALL CONTACT THE LANDSCAPE ARCHITECT IMMEDIATELY.

1.6 THE CONTRACTOR SHALL GUARANTEE ALL LANDSCAPE IMPROVEMENTS, INCLUDING SEEDING, FOR ONE FULL YEAR AS REQUIRED BY THE SPECIFICATIONS. THE CONTRACTOR SHALL BE SOLELY RESPONSIBLE FOR ALL PLANT MAINTENANCE DURING THE GUARANTEE PERIOD.

**LAYOUT NOTES:**

- ALL DIMENSIONS FOR BRICK AND CONCRETE WALKS ARE TO EDGE OF PAVING OR FACE OF WALLS AND COLUMNS UNLESS OTHERWISE INDICATED. ALL DIMENSIONS FOR GRANITE FINES PATHS ARE FROM INSIDE BRICK EDGE TO INSIDE BRICK EDGE.
- CONTRACTOR SHALL FIELD VERIFY ALL UTILITIES PRIOR TO CONSTRUCTION AND SHALL NOTIFY OWNER'S REPRESENTATIVE OF ANY CONFLICTS.
- ALL FIELD ADJUSTMENTS SHALL RECEIVE APPROVAL FROM THE OWNER'S REPRESENTATIVE PRIOR TO CONSTRUCTION.
- ALL WALKS, HARDSCAPE, AND OTHER PAVED AREAS SHALL BE STAKED USING DIGITAL FILES PROVIDED BY LANDSCAPE ARCHITECT AND REVIEWED WITH LANDSCAPE ARCHITECT AND OWNER'S REPRESENTATIVE PRIOR TO CONSTRUCTION.
- ALL CONSTRUCTION STAKING SHALL BE THE RESPONSIBILITY OF THE CONTRACTOR.
- ALL ANGLES ARE 90 DEGREES UNLESS OTHERWISE NOTED.
- OWNER AND CONTRACTOR TO COORDINATE FINAL BRICK PATTERN LAYOUT WITH LANDSCAPE ARCHITECT ON SITE PRIOR TO INSTALLATION.

**PEDESTRIAN AND VEHICULAR PAVERS ORIENTATION / DIRECTION**  
 - ORIENTATION OF PAVER PATTERNS (VEHICULAR AND PEDESTRIAN) TO BE ALIGNED AS IT IS SHOWN ON THE DRAWINGS.  
**CONTRACTOR TO COORDINATE FINAL ORIENTATION OF PATTERN WITH LANDSCAPE ARCHITECT PRIOR TO INSTALLATION.**



PAVEMENT SCHEDULE:	
	VEHICULAR PERVIOUS PAVERS - TECO-BLOC PERMEABLE CHESTNUT PAVERS - SEE DETAIL 6/L-6.0 AREA = 6,279 SF
	STREETSCAPE PAVERS (RUNNING BOND PATTERN) - BELDEN BRICK CITY LINE NUTMEG PAVERS - SEE DETAIL 5/L-6.0 AREA = 5,408 SF
	COURTYARD PAVERS (RUNNING BOND PATTERN) - BELDEN BRICK CITY LINE NUTMEG PAVERS - SEE DETAIL 5/L-6.0 AREA = 363 SF
	COURTYARD PAVERS (HERRINGBONE PATTERN) - BELDEN BRICK CITY LINE NUTMEG PAVERS - SEE DETAIL 5/L-6.0 AREA = 6,807 SF
	CONCRETE SIDEWALK - SEE DETAILS 1, 3, & 4/L-6.0 AREA = 12,912 SF
	HEAVY-DUTY CONCRETE - SEE DETAIL 2/L-6.0 AREA = 3,727 SF
	STAMPED & DYED CONCRETE - SEE DETAIL 12/L-6.0 AREA = 745 SF
	CROSSWALK - SEE DETAIL 8/L-6.0 AREA = 2,401 SF
	ADA DETECTABLE WARNING PATTERNS (TRUNCATED DOME MATS) - SEE DETAIL 10/L-6.0 QTY = 283 LF
	ADA DETECTABLE WARNING PAVERS (TRUNCATED DOME PAVERS) - SEE DETAIL 11/L-6.0 QTY = 99 LF
	BRICK BANDING - SEE DETAIL 7/L-6.0 QTY = 245 LF
	6" RISER CONCRETE STEPS (STREETS) - SEE DETAILS 8 & 9/L-6.1 QTY = 644 LF
	6" HT. 30" CURB + GUTTER (STREETS) - SEE CIVIL DRAWINGS QTY = 1,816 LF
	MOUNTABLE CURB (STREETS) - SEE CIVIL DRAWINGS QTY = 211 LF
	FLUSH CURB - SEE CIVIL DRAWINGS QTY = 407 LF
	4" HT. 24" CURB + GUTTER (PARKING) - SEE CIVIL DRAWINGS - SEE DETAIL 2/L-6.1 QTY = 347 LF
	9" X 18" CURB - SEE CIVIL DRAWINGS QTY = 656 LF
	6" CONCRETE CURB (PEDESTRIAN) - SEE DETAIL 1/L-6.1 QTY = 283 LF
	BRICK PEDESTRIAN CURB - SEE DETAIL 4/L-6.1 QTY = 44 LF
	BRICK COLUMN - SEE DETAIL 4/L-6.2 QTY = 20
	BRICK SEATWALL (16" WIDE WALL W/ 20" CAP) - SEE DETAILS 5 & 6/L-6.2 QTY = 185 FF
	BRICK SEATWALL (28" WIDE WALL W/ 32" CAP) - SEE DETAILS 5 & 6/L-6.2 QTY = 64 FF
	BRICK CURVED SEATWALL (16" WIDE WALL W/ 20" CAP) - SEE DETAILS 1 & 2/L-6.2 QTY = 715 FF
	BRICK FREE STANDING WALL (12" WIDE WALL W/ CAP) - SEE DETAIL 1 & 2/L-6.2 QTY = 422 FF

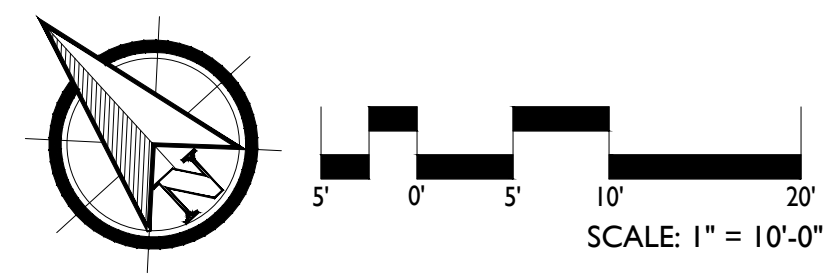
**CAUTION**  
 THE UTILITIES SHOWN HEREON ARE FOR THE CONTRACTOR'S CONVENIENCE ONLY. THERE MAY BE OTHER UTILITIES NOT DEPICTED ON THESE PLANS. THE LANDSCAPE ARCHITECT AND ENGINEER ASSUMES NO RESPONSIBILITY FOR THE LOCATIONS SHOWN AND IT SHALL BE THE CONTRACTOR'S RESPONSIBILITY TO VERIFY THE LOCATIONS OF ALL UTILITIES WITHIN THE PROJECT LIMITS. ALL DAMAGE MADE TO THE EXISTING UTILITIES BY THE CONTRACTOR SHALL BE THE SOLE RESPONSIBILITY BY THE CONTRACTOR.

140 APPLECROSS RD., STE B  
 PINEHURST, NC 28374  
 P: (910) 684-8487  
 W: www.t3co.com



REVISIONS:  
 1. 2026-03-02 ADDENDUM #1

**CARTHAGE DOWNTOWN REVITALIZATION**  
 CARTHAGE, NORTH CAROLINA  
**SITE LAYOUT PLAN ENLARGEMENT**



DATE: 2026-02-06  
 DESIGNED BY: TWH  
 DRAWN BY: DWM  
 CHECKED BY: TWH  
 SCALE: 1"=10'  
 PROJECT #: 250448  
 SHEET NUMBER:  
**L-3.4**

**LEGEND**

	PROJECT LIMITS OF DISTURBANCE
	EXISTING MAJOR CONTOUR
	EXISTING MINOR CONTOUR
	EXISTING RIGHT-OF-WAY
	EXISTING SANITARY SEWER LINE
	EXISTING MANHOLE
	EXISTING FENCE LINE
	EXISTING WATER LINE
	EXISTING FIRE HYDRANT
	EXISTING STORM DRAIN PIPE
	EXISTING ELECTRICAL VAULT
	EXISTING IRRIGATION VALVE
	EXISTING PINE TREE
	EXISTING HARDWOOD TREE
	EXISTING SHRUB
	PROPOSED WALL
	EXISTING LIGHT POLE
	PROPOSED DUKE PARKING LIGHT - SEE DETAIL 11/L-6.4
	EXISTING REPLACED DUKE LIGHT - SEE DETAIL 11/L-6.4
	EXISTING TREE/SHRUB SAVED
	EXISTING TREE CREDIT
	EXISTING BUILDING ENTRANCE

**PAVEMENT SCHEDULE:**

	VEHICULAR PERVIOUS PAVERS - TECH-BLOC PERMEABLE CHESTNUT PAVERS - SEE DETAIL 6/L-6.0 AREA = 6,279 SF
	STREETSCAPE PAVERS (RUNNING BOND PATTERN) - BELDEN BRICK CITY LINE NUTMEG PAVERS - SEE DETAIL 5/L-6.0 AREA = 5,408 SF
	COURTYARD PAVERS (RUNNING BOND PATTERN) - BELDEN BRICK CITY LINE NUTMEG PAVERS - SEE DETAIL 5/L-6.0 AREA = 383 SF
	COURTYARD PAVERS (HERRINGBONE PATTERN) - BELDEN BRICK CITY LINE NUTMEG PAVERS - SEE DETAIL 5/L-6.0 AREA = 6,697 SF
	CONCRETE SIDEWALK - SEE DETAILS 1, 3, & 4/L-6.0 AREA = 12,912 SF
	HEAVY-DUTY CONCRETE - SEE DETAIL 2/L-6.0 AREA = 3,727 SF
	STAMPED & DYED CONCRETE - SEE DETAIL 10/L-6.0 AREA = 745 SF
	CROSSWALK - SEE DETAIL 8/L-6.0 AREA = 2,401 SF
	ADA DETECTABLE WARNING PATTERNS (TRUNCATED DOME MATS) - SEE DETAIL 10/L-6.0 QTY = 267 LF
	ADA DETECTABLE WARNING PAVERS (TRUNCATED DOME PAVERS) - SEE DETAIL 11/L-6.0 QTY = 99 LF
	BRICK BANDING - SEE DETAIL 7/L-6.0 QTY = 245 LF
	6" RISER CONCRETE STEPS (STREETS) - SEE DETAILS 9 & 9/L-6.1 QTY = 644 LF

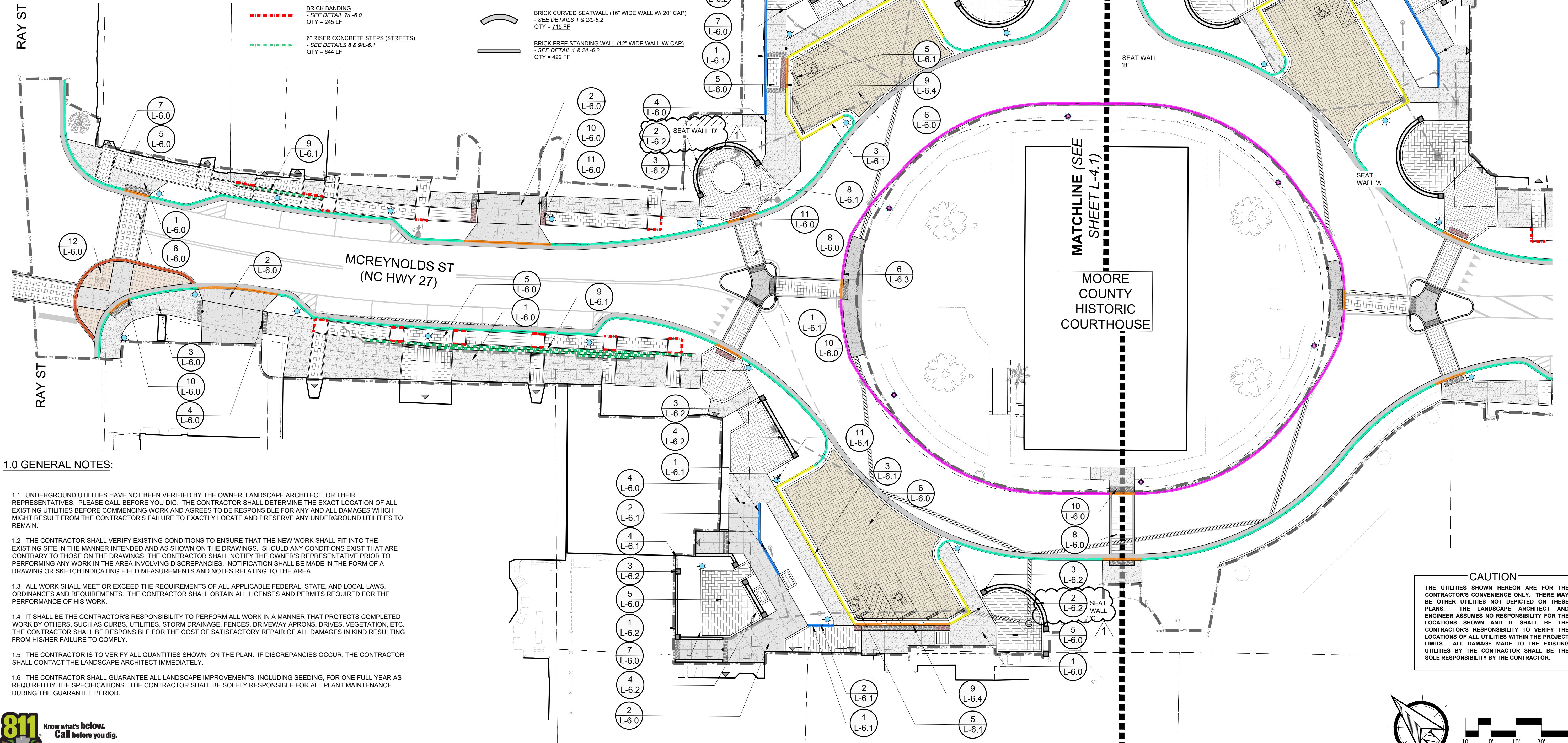
	6" HT. 30" CURB + GUTTER (STREETS) - SEE CIVIL DRAWINGS QTY = 1,816 LF
	MOUNTABLE CURB (STREETS) - SEE CIVIL DRAWINGS QTY = 211 LF
	FLUSH CURB - BELDEN BRICK CITY LINE NUTMEG PAVERS - SEE CIVIL DRAWINGS QTY = 407 LF
	4" HT. 24" CURB + GUTTER (PARKING) - SEE CIVIL DRAWINGS - SEE DETAIL 2/L-6.1 QTY = 347 LF
	6" STRAIGHT CURB - SEE CIVIL DRAWINGS - SEE DETAIL 1/L-6.1 QTY = 656 LF
	6" CONCRETE CURB (PEDESTRIAN) - SEE DETAIL 1/L-6.1 QTY = 283 LF
	BRICK PEDESTRIAN CURB - SEE DETAIL 4/L-6.1 QTY = 44 LF
	BRICK COLUMN - SEE DETAIL 4/L-6.2 QTY = 20
	BRICK SEATWALL (16" WIDE WALL W/ 20" CAP) - SEE DETAILS 5 & 6/L-6.2 QTY = 185 FF
	BRICK SEATWALL (28" WIDE WALL W/ 32" CAP) - SEE DETAILS 5 & 6/L-6.2 QTY = 64 FF
	BRICK CURVED SEATWALL (16" WIDE WALL W/ 20" CAP) - SEE DETAILS 7 & 2/L-6.2 QTY = 715 FF
	BRICK FREE STANDING WALL (12" WIDE WALL W/ CAP) - SEE DETAIL 7 & 2/L-6.2 QTY = 422 FF

**LAYOUT NOTES:**

1. ALL DIMENSIONS FOR BRICK AND CONCRETE WALKS ARE TO EDGE OF PAVING OR FACE OF WALLS AND COLUMNS UNLESS OTHERWISE INDICATED. ALL DIMENSIONS FOR GRANITE FINES PATHS ARE FROM INSIDE BRICK EDGE TO INSIDE BRICK EDGE.
2. CONTRACTOR SHALL FIELD VERIFY ALL UTILITIES PRIOR TO CONSTRUCTION AND SHALL NOTIFY OWNER'S REPRESENTATIVE OF ANY CONFLICTS.
3. ALL FIELD ADJUSTMENTS SHALL RECEIVE APPROVAL FROM THE OWNER'S REPRESENTATIVE PRIOR TO CONSTRUCTION.
4. ALL WALKS, HARDSCAPE, AND OTHER PAVED AREAS SHALL BE STAKED USING DIGITAL FILES PROVIDED BY LANDSCAPE ARCHITECT AND REVIEWED WITH LANDSCAPE ARCHITECT AND OWNER'S REPRESENTATIVE PRIOR TO CONSTRUCTION.
5. ALL CONSTRUCTION STAKING SHALL BE THE RESPONSIBILITY OF THE CONTRACTOR.
6. ALL ANGLES ARE 90 DEGREES UNLESS OTHERWISE NOTED.
7. OWNER AND CONTRACTOR TO COORDINATE FINAL BRICK PATTERN LAYOUT WITH LANDSCAPE ARCHITECT ON SITE PRIOR TO INSTALLATION.

**PEDESTRIAN AND VEHICULAR PAVERS ORIENTATION / DIRECTION**

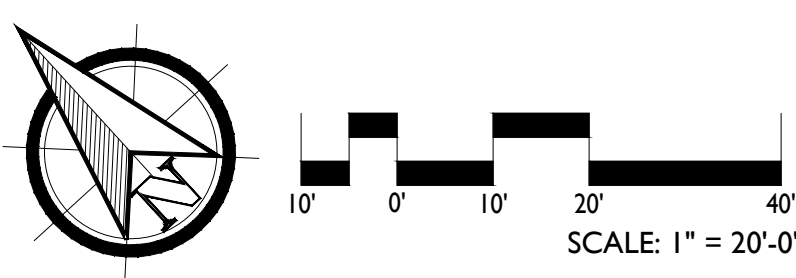
- ORIENTATION OF PAVEMENT PATTERNS (VEHICULAR AND PEDESTRIAN) TO BE ALIGNED AS IT IS SHOWN ON THE DRAWINGS. CONTRACTOR TO COORDINATE FINAL ORIENTATION OF PATTERN WITH LANDSCAPE ARCHITECT PRIOR TO INSTALLATION.



- 1.0 GENERAL NOTES:**
- 1.1 UNDERGROUND UTILITIES HAVE NOT BEEN VERIFIED BY THE OWNER, LANDSCAPE ARCHITECT, OR THEIR REPRESENTATIVES. PLEASE CALL BEFORE YOU DIG. THE CONTRACTOR SHALL DETERMINE THE EXACT LOCATION OF ALL EXISTING UTILITIES BEFORE COMMENCING WORK AND AGREES TO BE RESPONSIBLE FOR ANY AND ALL DAMAGES WHICH MIGHT RESULT FROM THE CONTRACTOR'S FAILURE TO EXACTLY LOCATE AND PRESERVE ANY UNDERGROUND UTILITIES TO REMAIN.
  - 1.2 THE CONTRACTOR SHALL VERIFY EXISTING CONDITIONS TO ENSURE THAT THE NEW WORK SHALL FIT INTO THE EXISTING SITE IN THE MANNER INTENDED AND AS SHOWN ON THE DRAWINGS. SHOULD ANY CONDITIONS EXIST THAT ARE CONTRARY TO THOSE ON THE DRAWINGS, THE CONTRACTOR SHALL NOTIFY THE OWNER'S REPRESENTATIVE PRIOR TO PERFORMING ANY WORK IN THE AREA INVOLVING DISCREPANCIES. NOTIFICATION SHALL BE MADE IN THE FORM OF A DRAWING OR SKETCH INDICATING FIELD MEASUREMENTS AND NOTES RELATING TO THE AREA.
  - 1.3 ALL WORK SHALL MEET OR EXCEED THE REQUIREMENTS OF ALL APPLICABLE FEDERAL, STATE, AND LOCAL LAWS, ORDINANCES AND REQUIREMENTS. THE CONTRACTOR SHALL OBTAIN ALL LICENSES AND PERMITS REQUIRED FOR THE PERFORMANCE OF HIS WORK.
  - 1.4 IT SHALL BE THE CONTRACTOR'S RESPONSIBILITY TO PERFORM ALL WORK IN A MANNER THAT PROTECTS COMPLETED WORK BY OTHERS, SUCH AS CURBS, UTILITIES, STORM DRAINAGE, FENCES, DRIVEWAY APRONS, DRIVES, VEGETATION, ETC. THE CONTRACTOR SHALL BE RESPONSIBLE FOR THE COST OF SATISFACTORY REPAIR OF ALL DAMAGES IN KIND RESULTING FROM HIS/HER FAILURE TO COMPLY.
  - 1.5 THE CONTRACTOR IS TO VERIFY ALL QUANTITIES SHOWN ON THE PLAN. IF DISCREPANCIES OCCUR, THE CONTRACTOR SHALL CONTACT THE LANDSCAPE ARCHITECT IMMEDIATELY.
  - 1.6 THE CONTRACTOR SHALL GUARANTEE ALL LANDSCAPE IMPROVEMENTS, INCLUDING SEEDING, FOR ONE FULL YEAR AS REQUIRED BY THE SPECIFICATIONS. THE CONTRACTOR SHALL BE SOLELY RESPONSIBLE FOR ALL PLANT MAINTENANCE DURING THE GUARANTEE PERIOD.

**CAUTION**

THE UTILITIES SHOWN HEREON ARE FOR THE CONTRACTOR'S CONVENIENCE ONLY. THERE MAY BE OTHER UTILITIES NOT DEPICTED ON THESE PLANS. THE LANDSCAPE ARCHITECT AND ENGINEER ASSUMES NO RESPONSIBILITY FOR THE LOCATIONS SHOWN AND IT SHALL BE THE CONTRACTOR'S RESPONSIBILITY TO VERIFY THE LOCATIONS OF ALL UTILITIES WITHIN THE PROJECT LIMITS. ALL DAMAGE MADE TO THE EXISTING UTILITIES BY THE CONTRACTOR SHALL BE THE SOLE RESPONSIBILITY BY THE CONTRACTOR.



140 APPLECROSS RD, STE B  
PINEHURST, NC 28374  
P: (910) 684-6487  
W: www.3se.com

**3 SE**

NO. 122  
ROBERT E. KOONZ  
2/6/2026

REVISIONS:  
1. 2026-03-02 ADDENDUM #1

**CARTHAGE DOWNTOWN REVITALIZATION**  
CARTHAGE, NORTH CAROLINA

**SITE MATERIALS PLAN**

DATE: 2026-02-06  
DESIGNED BY: TWH  
DRAWN BY: DWM  
CHECKED BY: TWH  
SCALE: 1" = 20'  
PROJECT #: 250448  
SHEET NUMBER: **L-4.0**

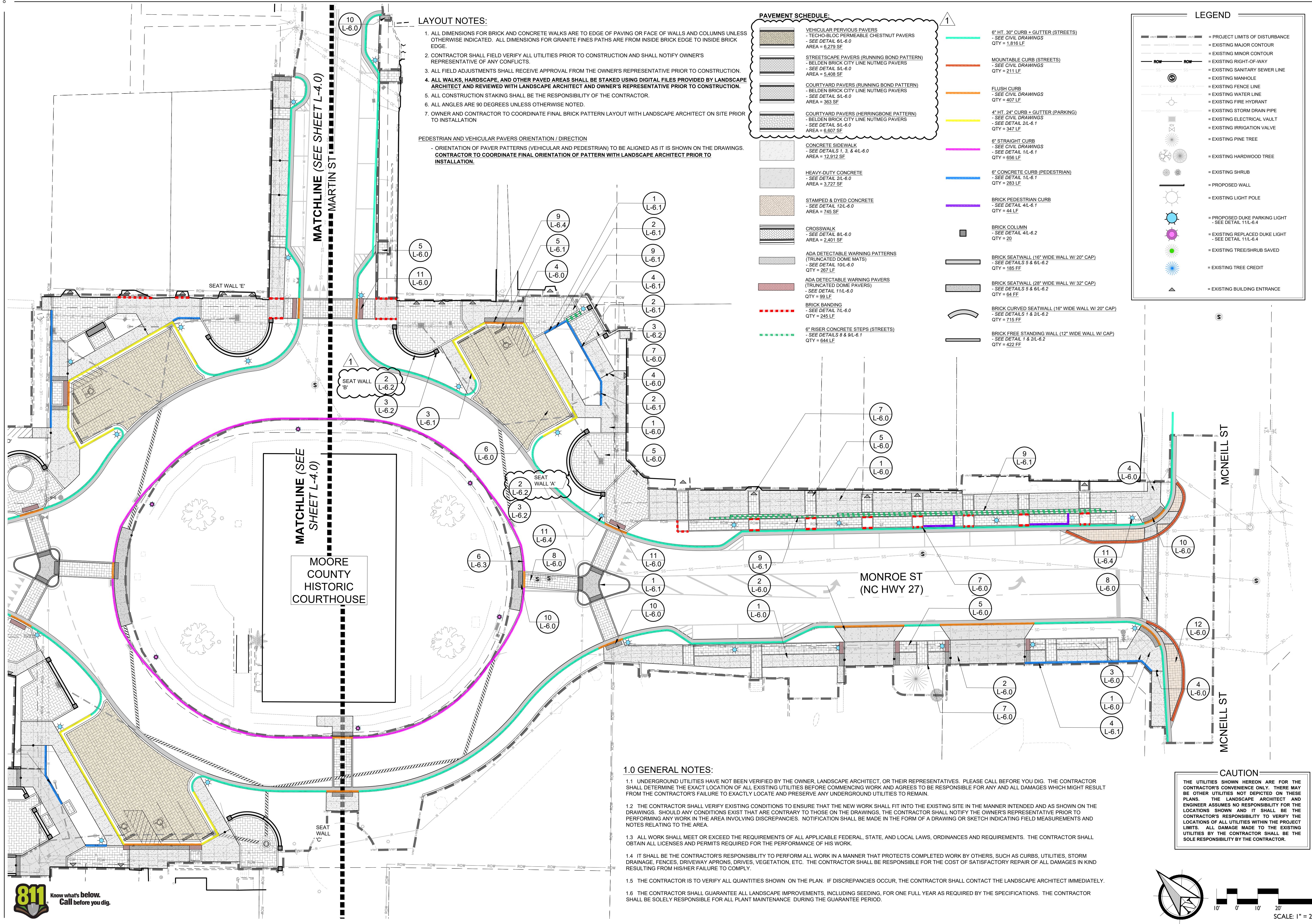


REVISIONS:  
 1. 2024-03-02 ADDENDUM #1

**CARTHAGE DOWNTOWN REVITALIZATION**  
 CARTHAGE, NORTH CAROLINA

**SITE MATERIALS PLAN**

DATE: 2024-02-06  
 DESIGNED BY: TWH  
 DRAWN BY: DVM  
 CHECKED BY: TWH  
 SCALE: 1" = 20'  
 PROJECT #: 250448  
 SHEET NUMBER: **L-4.1**



**LAYOUT NOTES:**

1. ALL DIMENSIONS FOR BRICK AND CONCRETE WALKS ARE TO EDGE OF PAVING OR FACE OF WALLS AND COLUMNS UNLESS OTHERWISE INDICATED. ALL DIMENSIONS FOR GRANITE FINES PATHS ARE FROM INSIDE BRICK EDGE TO INSIDE BRICK EDGE.
2. CONTRACTOR SHALL FIELD VERIFY ALL UTILITIES PRIOR TO CONSTRUCTION AND SHALL NOTIFY OWNER'S REPRESENTATIVE OF ANY CONFLICTS.
3. ALL FIELD ADJUSTMENTS SHALL RECEIVE APPROVAL FROM THE OWNER'S REPRESENTATIVE PRIOR TO CONSTRUCTION.
4. ALL WALKS, HARDSCAPE, AND OTHER PAVED AREAS SHALL BE STAKED USING DIGITAL FILES PROVIDED BY LANDSCAPE ARCHITECT AND REVIEWED WITH LANDSCAPE ARCHITECT AND OWNER'S REPRESENTATIVE PRIOR TO CONSTRUCTION.
5. ALL CONSTRUCTION STAKING SHALL BE THE RESPONSIBILITY OF THE CONTRACTOR.
6. ALL ANGLES ARE 90 DEGREES UNLESS OTHERWISE NOTED.
7. OWNER AND CONTRACTOR TO COORDINATE FINAL BRICK PATTERN LAYOUT WITH LANDSCAPE ARCHITECT ON SITE PRIOR TO INSTALLATION.

**PEDESTRIAN AND VEHICULAR PAVERS ORIENTATION / DIRECTION**

ORIENTATION OF PAVEMENT PATTERNS (VEHICULAR AND PEDESTRIAN) TO BE ALIGNED AS IT IS SHOWN ON THE DRAWINGS. CONTRACTOR TO COORDINATE FINAL ORIENTATION OF PATTERN WITH LANDSCAPE ARCHITECT PRIOR TO INSTALLATION.

**PAVEMENT SCHEDULE:**

	VEHICULAR PERVIOUS PAVERS - TECHO-BLOC PERMEABLE CHESTNUT PAVERS - SEE DETAIL 8/L-6.0 - AREA = 9,279 SF		6" HT. 30" CURB + GUTTER (STREETS) - SEE CIVIL DRAWINGS - QTY = 1,818 LF
	STREETSCAPE PAVERS (RUNNING BOND PATTERN) - BELDEN BRICK CITY LINE NUTMEG PAVERS - SEE DETAIL 5/L-6.0 - AREA = 5,408 SF		MOUNTABLE CURB (STREETS) - SEE CIVIL DRAWINGS - QTY = 211 LF
	COURTYARD PAVERS (RUNNING BOND PATTERN) - BELDEN BRICK CITY LINE NUTMEG PAVERS - SEE DETAIL 5/L-6.0 - AREA = 363 SF		FLUSH CURB - BELDEN BRICK CITY LINE NUTMEG PAVERS - SEE DETAIL 5/L-6.0 - QTY = 407 LF
	COURTYARD PAVERS (HERRINGBONE PATTERN) - BELDEN BRICK CITY LINE NUTMEG PAVERS - SEE DETAIL 5/L-6.0 - AREA = 6,607 SF		4" HT. 24" CURB + GUTTER (PARKING) - SEE CIVIL DRAWINGS - BELDEN BRICK CITY LINE NUTMEG PAVERS - SEE DETAIL 2/L-6.1 - QTY = 347 LF
	CONCRETE SIDEWALK - SEE DETAILS 1, 3, & 4/L-6.0 - AREA = 12,912 SF		6" STRAIGHT CURB - SEE CIVIL DRAWINGS - SEE DETAIL 1/L-6.1 - QTY = 656 LF
	HEAVY-DUTY CONCRETE - SEE DETAIL 2/L-6.0 - AREA = 3,727 SF		6" CONCRETE CURB (PEDESTRIAN) - SEE DETAIL 1/L-6.1 - QTY = 283 LF
	STAMPED & DYED CONCRETE - SEE DETAIL 12/L-6.0 - AREA = 745 SF		BRICK PEDESTRIAN CURB - SEE DETAIL 4/L-6.1 - QTY = 44 LF
	CROSSWALK - SEE DETAIL 8/L-6.0 - AREA = 2,401 SF		BRICK COLUMN - SEE DETAIL 4/L-6.2 - QTY = 20
	ADA DETECTABLE WARNING PATTERNS (TRUNCATED DOME MATS) - SEE DETAIL 10/L-6.0 - QTY = 307 LF		BRICK SEATWALL (16" WIDE WALL W/ 20" CAP) - SEE DETAILS 5 & 6/L-6.2 - QTY = 185 FF
	ADA DETECTABLE WARNING PAVERS (TRUNCATED DOME PAVERS) - SEE DETAIL 11/L-6.0 - QTY = 99 LF		BRICK SEATWALL (28" WIDE WALL W/ 32" CAP) - SEE DETAILS 5 & 6/L-6.2 - QTY = 64 FF
	BRICK BANDING - SEE DETAIL 7/L-6.0 - QTY = 245 LF		BRICK CURVED SEATWALL (16" WIDE WALL W/ 20" CAP) - SEE DETAILS 1 & 2/L-6.2 - QTY = 715 FF
	6" RISER CONCRETE STEPS (STREETS) - SEE DETAILS 8 & 9/L-6.1 - QTY = 644 LF		BRICK FREE STANDING WALL (12" WIDE WALL W/ CAP) - SEE DETAIL 1 & 2/L-6.2 - QTY = 422 FF

**LEGEND**

	PROJECT LIMITS OF DISTURBANCE
	EXISTING MAJOR CONTOUR
	EXISTING MINOR CONTOUR
	EXISTING RIGHT-OF-WAY
	EXISTING SANITARY SEWER LINE
	EXISTING MANHOLE
	EXISTING FENCE LINE
	EXISTING WATER LINE
	EXISTING FIRE HYDRANT
	EXISTING STORM DRAIN PIPE
	EXISTING ELECTRICAL VAULT
	EXISTING IRRIGATION VALVE
	EXISTING PINE TREE
	EXISTING HARDWOOD TREE
	EXISTING SHRUB
	PROPOSED WALL
	EXISTING LIGHT POLE
	PROPOSED DUKE PARKING LIGHT - SEE DETAIL 11/L-6.4
	EXISTING REPLACED DUKE LIGHT - SEE DETAIL 11/L-6.4
	EXISTING TREE/SHRUB SAVED
	EXISTING TREE CREDIT
	EXISTING BUILDING ENTRANCE

**1.0 GENERAL NOTES:**

- 1.1 UNDERGROUND UTILITIES HAVE NOT BEEN VERIFIED BY THE OWNER, LANDSCAPE ARCHITECT, OR THEIR REPRESENTATIVES. PLEASE CALL BEFORE YOU DIG. THE CONTRACTOR SHALL DETERMINE THE EXACT LOCATION OF ALL EXISTING UTILITIES BEFORE COMMENCING WORK AND AGREES TO BE RESPONSIBLE FOR ANY AND ALL DAMAGES WHICH MIGHT RESULT FROM THE CONTRACTOR'S FAILURE TO EXACTLY LOCATE AND PRESERVE ANY UNDERGROUND UTILITIES TO REMAIN.
- 1.2 THE CONTRACTOR SHALL VERIFY EXISTING CONDITIONS TO ENSURE THAT THE NEW WORK SHALL FIT INTO THE EXISTING SITE IN THE MANNER INTENDED AND AS SHOWN ON THE DRAWINGS. SHOULD ANY CONDITIONS EXIST THAT ARE CONTRARY TO THOSE ON THE DRAWINGS, THE CONTRACTOR SHALL NOTIFY THE OWNER'S REPRESENTATIVE PRIOR TO PERFORMING ANY WORK IN THE AREA INVOLVING DISCREPANCIES. NOTIFICATION SHALL BE MADE IN THE FORM OF A DRAWING OR SKETCH INDICATING FIELD MEASUREMENTS AND NOTES RELATING TO THE AREA.
- 1.3 ALL WORK SHALL MEET OR EXCEED THE REQUIREMENTS OF ALL APPLICABLE FEDERAL, STATE, AND LOCAL LAWS, ORDINANCES AND REQUIREMENTS. THE CONTRACTOR SHALL OBTAIN ALL LICENSES AND PERMITS REQUIRED FOR THE PERFORMANCE OF HIS WORK.
- 1.4 IT SHALL BE THE CONTRACTOR'S RESPONSIBILITY TO PERFORM ALL WORK IN A MANNER THAT PROTECTS COMPLETED WORK BY OTHERS, SUCH AS CURBS, UTILITIES, STORM DRAINAGE, FENCES, DRIVEWAY APRONS, DRIVES, VEGETATION, ETC. THE CONTRACTOR SHALL BE RESPONSIBLE FOR THE COST OF SATISFACTORY REPAIR OF ALL DAMAGES IN KIND RESULTING FROM HIS/HER FAILURE TO COMPLY.
- 1.5 THE CONTRACTOR IS TO VERIFY ALL QUANTITIES SHOWN ON THE PLAN. IF DISCREPANCIES OCCUR, THE CONTRACTOR SHALL CONTACT THE LANDSCAPE ARCHITECT IMMEDIATELY.
- 1.6 THE CONTRACTOR SHALL GUARANTEE ALL LANDSCAPE IMPROVEMENTS, INCLUDING SEEDING, FOR ONE FULL YEAR AS REQUIRED BY THE SPECIFICATIONS. THE CONTRACTOR SHALL BE SOLELY RESPONSIBLE FOR ALL PLANT MAINTENANCE DURING THE GUARANTEE PERIOD.

**CAUTION**

THE UTILITIES SHOWN HEREON ARE FOR THE CONTRACTOR'S CONVENIENCE ONLY. THERE MAY BE OTHER UTILITIES NOT DEPICTED ON THESE PLANS. THE LANDSCAPE ARCHITECT AND ENGINEER ASSUMES NO RESPONSIBILITY FOR THE LOCATIONS SHOWN AND IT SHALL BE THE CONTRACTOR'S RESPONSIBILITY TO VERIFY THE LOCATIONS OF ALL UTILITIES WITHIN THE PROJECT LIMITS. ALL DAMAGE MADE TO THE EXISTING UTILITIES BY THE CONTRACTOR SHALL BE THE SOLE RESPONSIBILITY BY THE CONTRACTOR.

